

# XS7C4A1DPN12

Inductive proximity sensors XS, inductive sensor XS7 40x40x117, PBT, Sn15 mm, 12...48 VDC, terminals



## Main

|                                    |   |
|------------------------------------|---|
| Range of product                   | Telemecanique Inductive proximity sensors XS  |
| Series name                        | General purpose   |
| Sensor type                        | Inductive proximity sensor  |
| Device application                 | -   |
| Sensor name                        | XS7   |
| Sensor design                      | Form 40 x 40 x 117  |
| Size                               | 117 mm  |
| Body type                          | Fixed   |
| Detector flush mounting acceptance | Flush mountable   |
| Material                           | Plastic   |
| Enclosure material                 | PBT   |
| Type of output signal              | Discrete  |
| Wiring technique                   | 2-wire  |
| [Sn] nominal sensing distance      | 15 mm   |
| Discrete output function           | 1 NO or 1 NC programmable   |
| Output circuit type                | DC  |
| Electrical connection              | Screw-clamp terminals, 4 x 1.5 mm <sup>2</sup>  |
| [Us] rated supply voltage          | 12...48 V DC with reverse polarity protection   |
| Switching capacity in mA           | 1.5...100 mA with overload and short-circuit protection                                       |
| IP degree of protection            | IP67 conforming to IEC 60529<br>IP65 conforming to IEC 60529<br>IP69K conforming to DIN 40050 |

## Complementary

|                          |   |
|--------------------------|---|
| Detection face           | 5 positions turret head                 |
| Front material           | PBT                                     |
| Operating zone           | 0...12 mm                               |
| Differential travel      | 3...15% of Sr                           |
| Repeat accuracy          | <= 3% of Sr                             |
| Cable entry number       | 1 tapped entry for 1/2" NPT cable gland |
| Status LED               | Output state: 1 LED (yellow)            |
| Supply voltage limits    | 10...58 V DC                            |
| Maximum residual current | 0.6 mA open state                       |
| Switching frequency      | <= 300 Hz                               |
| Maximum voltage drop     | <4.2 V (closed)                         |
| Maximum delay first up   | 7.5 ms                                  |
| Maximum delay response   | 1.2 ms                                  |
| Maximum delay recovery   | 1.8 ms                                  |
| Marking                  | CE                                      |
| Height                   | 40 mm                                   |
| Length                   | 40 mm                                   |
| Width                    | 117 mm                                  |
| Net weight               | 0.244 kg                                |

## Environment

|                                       |   |
|---------------------------------------|---|
| Product certifications                | CSA[RETURN]UL[RETURN]CCC  |
| Ambient air temperature for operation | -25...70 °C   |
| Ambient air temperature for storage   | -40...85 °C   |
| Vibration resistance                  | 25 gn amplitude = +/- 2 mm (f = 10...55 Hz) conforming to IEC 60068-2-6 |
| Shock resistance                      | 50 gn for 11 ms conforming to EN 60068-2-27                             |

## Packing Units

|                              |         |
|------------------------------|---------|
| Unit Type of Package 1       | PCE     |
| Number of Units in Package 1 | 1       |
| Package 1 Height             | 14.5 cm |
| Package 1 Width              | 5.0 cm  |
| Package 1 Length             | 5.0 cm  |
| Package 1 Weight             | 244.0 g |

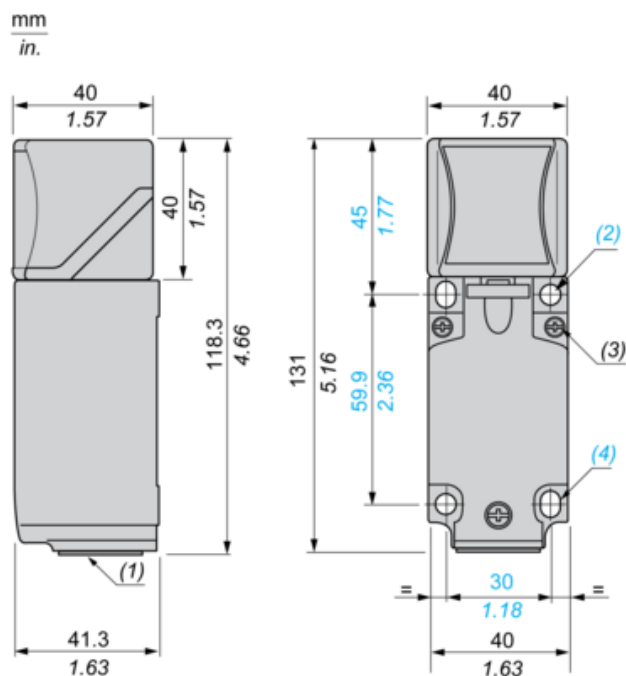
## Offer Sustainability

|  |   |
|--|---|
| Sustainable offer status                   | Green Premium product   |
| Circularity Profile                        | No need of specific recycling operations  |
| California proposition 65                  | WARNING: This product can expose you to chemicals including: Diisononyl phthalate (DINP), which is known to the State of California to cause cancer, and Di-isodecyl phthalate (DIDP), which is known to the State of California to cause birth defects or other reproductive harm. For more information go to <a href="http://www.P65Warnings.ca.gov">www.P65Warnings.ca.gov</a> |
| For all Reach Rohs enquiries contact us at | <a href="mailto:sustainability@tesensors.com">sustainability@tesensors.com</a>  |

## Contractual warranty

|          |           |
|----------|-----------|
| Warranty | 18 months |
|----------|-----------|

## Dimensions



(1) : 1/2" NPT cable gland.

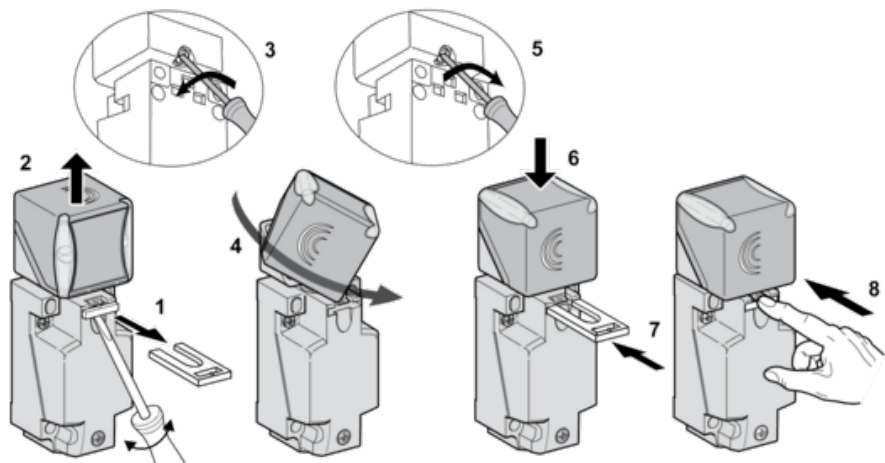
(2) : 2 holes Ø 5,45 mm / Ø 0.21 in. Tightening torque: < 1,5 Nm / < 13.3 lb-in.

(3) : 3 screws M3,5. Tightening torque: < 1,2 Nm / < 10.6 lb-in.

(4) : 2 elongated holes 5,4 x 7,4 mm / 0.21 x 0.29 in. Tightening torque: < 1,5 Nm / < 13.3 lb-in".

## Mounting

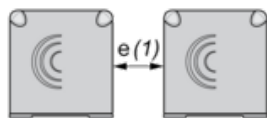
### Head Positions



## Setting-up Precautions

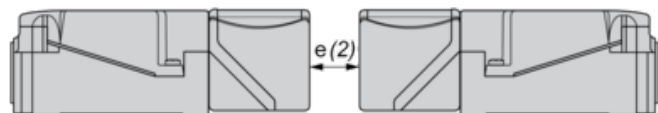
### Minimum Mounting Distances (mm)

Side by Side



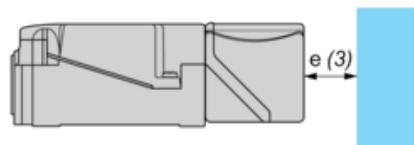
$$e(1) \geq 60$$

Face to Face



$$e(2) \geq 120$$

Facing a Metal Object



$$e(3) \geq 45$$

---

## Wiring Schemes

---

### 2-Wire DC (Non Polarised)

