

# XMLD010B1S11

pressure switch XMLD 10 bar - 2 stages fixed  
scale - 2 C/O



## Main

|   |   |
|---|---|
| Range of product                        | Telemecanique Pressure sensors XM   |
| Product or component type               | Electromechanical pressure sensor   |
| Pressure sensor type                    | Electromechanical pressure sensor   |
| Device short name                       | XMLD  |
| Pressure rating                         | 10 bar  |
| Controlled fluid                        | Air (0...160 °C)<br>Fresh water (0...160 °C)<br>Hydraulic oil (0...160 °C)  |
| Fluid connection type                   | G 1/4 (female) conforming to ISO 228  |
| Electrical connection                   | Screw-clamps terminals, 1 x 0.5...2 x 2.5 mm²   |
| AWG gauge                               | AWG 20...AWG 14   |
| Cable entry                             | Cable gland 9...13 mm   |
| Contacts type and composition           | 2 C/O snap action, silver contacts<br>2 C/O staggered, silver contacts  |
| Product specific application            | Dual stage  |
| Pressure switch type of operation       | Detection of 2 single thresholds  |
| Electrical circuit type                 | Control circuit   |
| Scale type                              | Fixed differential  |
| Local display                           | Without   |
| Maximum permissible accidental pressure | 22.5 bar  |
| Destruction pressure                    | 45 bar  |
| Pressure actuator                       | Diaphragm   |
| Materials in contact with fluid         | FPM, FKM<br>Brass   |
| Enclosure material                      | Zinc alloy  |
| [In] rated current                      | 3 A, B300, AC-15 (Ue = 120 V) conforming to IEC 60947-5-1<br>1.5 A, B300, AC-15 (Ue = 240 V) conforming to IEC 60947-5-1<br>0.1 A, R300, DC-13 (Ue = 250 V) conforming to IEC 60947-5-1 |

## Complementary

|  |  |
|--|--|
| Spread between 2 stages                  | 0.68...5.8 bar   |
| Natural differential at low setting      | 0.45 bar   |
| Natural differential at high setting     | 0.6 bar  |
| Maximum permissible pressure - per cycle | 12.5 bar   |
| Terminal block type                      | 8 terminals  |
| Maximum operating rate                   | 120 cyc/mn   |
| Repeat accuracy                          | 2 %  |
| [Ui] rated insulation voltage            | 300 V conforming to UL 508<br>500 V conforming to IEC 60947-1<br>300 V conforming to CSA C22.2 No 14 |
| [Uimp] rated impulse withstand voltage   | 6 kV conforming to IEC 60947-1   |
| Maximum resistance across terminals      | 25 MOhm conforming to IEC 255-7 category 3<br>25 mOhm conforming to NF C 93-050 method A             |
| Short-circuit protection                 | 10 A cartridge fuse, type gG (gl)  |
| Mechanical durability                    | 5000000 cycles   |

|            |          |
|------------|----------|
| Setting    | External |
| Height     | 113 mm   |
| Depth      | 85 mm    |
| Width      | 46 mm    |
| Net weight | 0.705 kg |

## Environment

|                                       |  |
|---------------------------------------|--|
| Standards                             | CSA C22.2 No 14<br>IEC 60947-5-1<br>UL 508<br>CE   |
| Product certifications                | UL[RETURN]CSA  |
| Protective treatment                  | TC standard version  |
| Ambient air temperature for operation | -25...70 °C  |
| Ambient air temperature for storage   | -40...70 °C  |
| Operating position                    | Any position   |
| Vibration resistance                  | 4 gn conforming to IEC 60068-2-6 (f = 30...500 Hz)   |
| Shock resistance                      | 50 gn conforming to IEC 60068-2-27   |
| Electrical shock protection class     | Class I conforming to IEC 1140<br>Class I conforming to IEC 536<br>Class I conforming to NF C 20-030 |
| IP degree of protection               | IP66 conforming to IEC 60529   |

## Packing Units

|                              |         |
|------------------------------|---------|
| Unit Type of Package 1       | PCE     |
| Number of Units in Package 1 | 1       |
| Package 1 Height             | 15.2 cm |
| Package 1 Width              | 15.5 cm |
| Package 1 Length             | 15.1 cm |
| Package 1 Weight             | 1.05 kg |

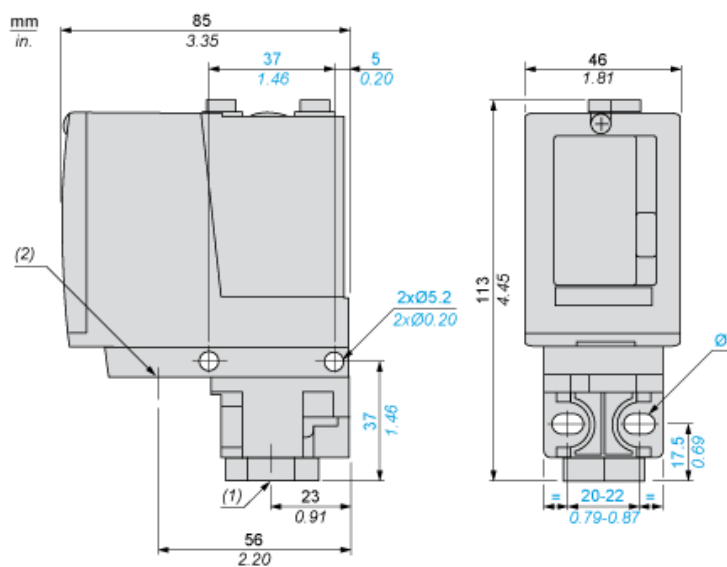
## Offer Sustainability

|  |   |
|--|---|
| Sustainable offer status                   | Green Premium product   |
| Circularity Profile                        | No need of specific recycling operations  |
| California proposition 65                  | WARNING: This product can expose you to chemicals including: Diisononyl phthalate (DINP), which is known to the State of California to cause cancer, and Di-isodecyl phthalate (DIDP), which is known to the State of California to cause birth defects or other reproductive harm. For more information go to <a href="http://www.P65Warnings.ca.gov">www.P65Warnings.ca.gov</a> |
| For all Reach Rohs enquiries contact us at | <a href="mailto:sustainability@tesensors.com">sustainability@tesensors.com</a>  |

## Contractual warranty

|          |           |
|----------|-----------|
| Warranty | 18 months |
|----------|-----------|

## Dimensions



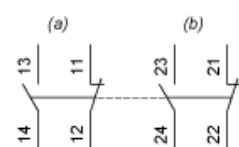
- (1) 1 fluid entry, tapped G1/4 (BSP female)  
(2) 1 electrical connections entry, tapped Pg 13.5  
Ø : 2 elongated holes Ø 5.2 x 6.7

---

## Wiring Diagram

---

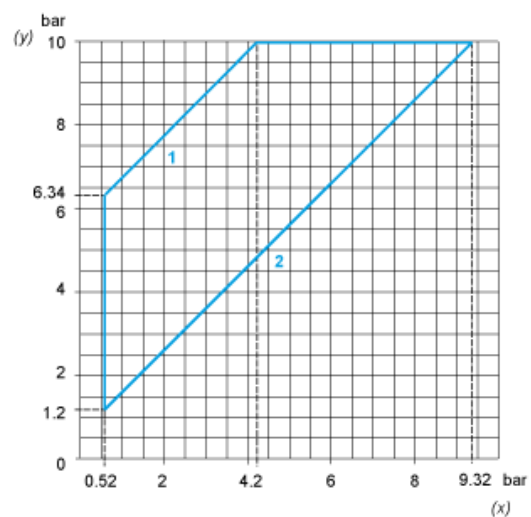
### Terminal Model



- (a) Contact 1  
(b) Contact 2

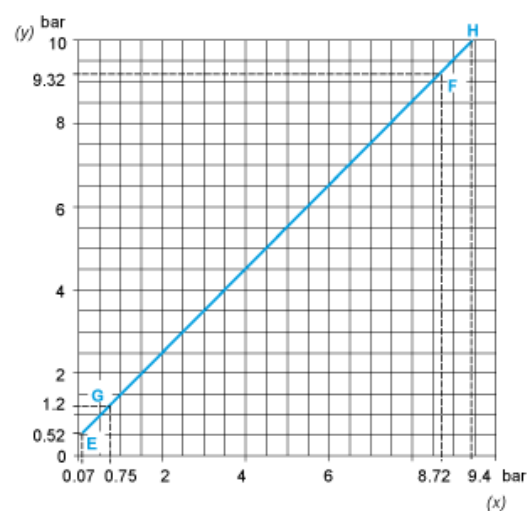
## Operating Curves

### High Setting Tripping Points of Contacts 1 and 2

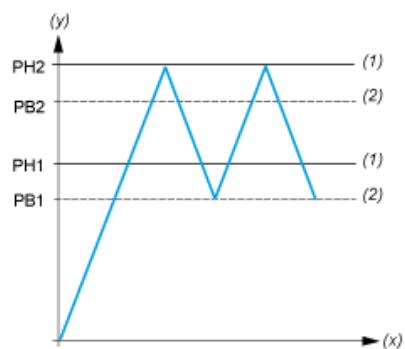


- (y) PH2 setting (rising pressure)  
(x) PH1 setting (rising pressure)  
1 : Maximum differential  
2 : Minimum differential

### Natural Differential of Contacts 1 and 2



- (y) Rising pressure  
(x) Falling pressure  
EF : Contact 1  
GH : Contact 2



(y) Pressure  
 (x) Time  
 (1) Adjustable value  
 (2) Non adjustable value  
 PH : High point  
 PB : Below point