

Main

| | |
|------------------------------|--|
| Range of product | OsiSense XC |
| Series name | Special format |
| Product or component type | Limit switch |
| Product specific application | For severe applications |
| Device short name | XC2J |
| Body type | Fixed |
| Head type | Rotary head |
| Material | Metal |
| Movement of operating head | Rotary |
| Type of operator | Roller lever thermoplastic variable length |
| Switch actuation | By 30° cam |
| Type of approach | Lateral approach, 2 directions |
| Number of poles | 1 |
| Contact operation | Snap action |
| Minimum torque for tripping | 0.3 N.m |
| Maximum actuation speed | 1.5 m/s |

Complementary

| | |
|-------------------------------------|---|
| Fixing mode | By the body |
| Electrical connection | Screw-clamp terminals, clamping capacity: 1 x 0.5...2 x 2.5 mm ² |
| Cable entry | 1 entry incorporating cable gland, cable outer diameter: 6...13.5 mm |
| Contacts insulation form | Za |
| Contacts material | Silver plated contacts |
| Positive opening | Without |
| Minimum actuation speed | 0.001 m/min |
| Contact code designation | A300, AC-15 (Ue = 240 V), Ie = 3 A, Ithe = 10 A conforming to IEC 60947-5-1 Q300, DC-13 (Ue = 250 V), Ie = 0.27 A conforming to IEC 60947-5-1 |
| [Ui] rated insulation voltage | 500 V conforming to IEC 60947-5-1 500 V conforming to NF C 20-040 group C 300 V conforming to CSA C22.2 No 14 |
| Maximum resistance across terminals | 25 MOhm conforming to IEC 60255-7 category 3 25 MOhm conforming to NF C 93-050 method A |
| Short-circuit protection | 10 A cartridge fuse, type gG |
| Electrical durability | 5000000 Cycles, DC-13, 120 V, 4 W, operating rate <3600 cyc/h, load factor: 0.5 conforming to IEC 60947-5-1 appendix C 5000000 Cycles, DC-13, 24 V, 10 W, operating rate <3600 cyc/h, load factor: 0.5 conforming to IEC 60947-5-1 appendix C 5000000 cycles, DC-13, 48 V, 7 W, operating rate <3600 cyc/h, load factor: 0.5 conforming to IEC 60947-5-1 appendix C |
| Mechanical durability | 30000000 cycles |
| Width | 40 mm |
| Height | 222 mm |
| Depth | 65 mm |
| Net weight | 0.605 kg |
| Terminals description ISO n°1 | (13-14-11-12)OF |

Environment

| | |
|---------------------------------------|---|
| Shock resistance | 25 gn for 18 ms conforming to IEC 60068-2-27 |
| Vibration resistance | 10 gn (f= 10...500 Hz) conforming to IEC 60068-2-6 |
| IP degree of protection | IP65 conforming to IEC 60529 IP657 conforming to IEC 60529 |
| IK degree of protection | IK08 |
| Electrical shock protection class | Class I conforming to IEC 60536 Class I conforming to NF C 20-030 |
| Ambient air temperature for operation | -25...70 °C |
| Ambient air temperature for storage | -40...70 °C |
| Protective treatment | TC |
| Product certifications | NEMKO[RETURN]DEMKO[RETURN]CSA |
| Standards | VDE 0660-200 IEC 60947-5-1 UL 508 CSA C22.2 No 14 IEC 60337-1 |

Packing Units

| | |
|------------------------------|-----------|
| Unit Type of Package 1 | PCE |
| Number of Units in Package 1 | 1 |
| Package 1 Height | 7.200 cm |
| Package 1 Width | 14.500 cm |
| Package 1 Length | 4.700 cm |
| Package 1 Weight | 638.000 g |
| Unit Type of Package 2 | S01 |
| Number of Units in Package 2 | 7 |
| Package 2 Height | 15.000 cm |
| Package 2 Width | 15.000 cm |
| Package 2 Length | 40.000 cm |
| Package 2 Weight | 4.650 kg |

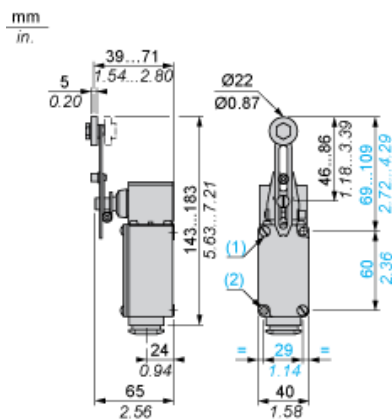
Offer Sustainability

| | |
|--|---|
| Sustainable offer status | Green Premium product |
| Circularity Profile | No need of specific recycling operations |
| California proposition 65 | WARNING: This product can expose you to chemicals including: Diisononyl phthalate (DINP), which is known to the State of California to cause cancer, and Di-isodecyl phthalate (DIDP), which is known to the State of California to cause birth defects or other reproductive harm. For more information go to www.P65Warnings.ca.gov |
| For all Reach Rohs enquiries contact us at | sustainability@tesensors.com |

Contractual warranty

| | |
|----------|-----------|
| Warranty | 18 months |
|----------|-----------|

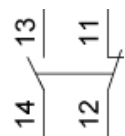
Dimensions



- (1) Fixing from the rear: by 2 M5 screws. Depth of thread on switch: 10 mm.
- (2) Fixing from the front via 2 holes Ø 5.5.

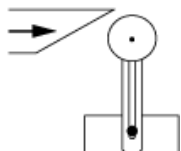
Wiring Diagram

Single-pole CO Snap Action

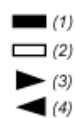


Characteristics of Actuation

Switch Actuation by 30° Cam



Functionnal Diagram



- (1) Closed
- (2) Open
- (3) Tripping
- (4) Resetting