

# Product datasheet

Specifications



## output sinus filter, Altivar, 95A, for variable speed drive

VW3A5405

### Main

Product or component type	Sinus filter
Range compatibility	Altivar Process ATV600 Altivar Process ATV900
Product specific application	Output filter

### Complementary

Maximum motor cable length	1000 m unshielded cable 500 m shielded cable
[In] rated current	95 A
Thermal losses	290 W at 4 kHz
Product compatibility	Variable speed drive ATV630 wall mount, motor: 15 kW, 200...240 V Variable speed drive ATV630 wall mount, motor: 18.5 kW, 200...240 V Variable speed drive ATV630 wall mount, motor: 22 kW, 200...240 V Variable speed drive ATV630 wall mount, motor: 30 kW, 380...480 V Variable speed drive ATV630 wall mount, motor: 37 kW, 380...480 V Variable speed drive ATV630 wall mount, motor: 45 kW, 380...480 V Variable speed drive ATV650 wall mount, motor: 30 kW, 380...480 V Variable speed drive ATV650 wall mount, motor: 37 kW, 380...480 V Variable speed drive ATV650 wall mount, motor: 45 kW, 380...480 V Variable speed drive ATV930 wall mount, motor: 15 kW, 200...240 V Variable speed drive ATV930 wall mount, motor: 18.5 kW, 200...240 V Variable speed drive ATV930 wall mount, motor: 22 kW, 200...240 V Variable speed drive ATV930 wall mount, motor: 30 kW, 380...480 V Variable speed drive ATV930 wall mount, motor: 37 kW, 380...480 V Variable speed drive ATV930 wall mount, motor: 45 kW, 380...480 V Variable speed drive ATV950 wall mount, motor: 30 kW, 380...480 V Variable speed drive ATV950 wall mount, motor: 37 kW, 380...480 V Variable speed drive ATV950 wall mount, motor: 45 kW, 380...480 V
Electrical connection	terminal block, connection capacity: 50 mm² / AWG 1
Operating altitude	<= 1000 m without current derating 1000...4000 m with current derating 1 % per 100 m
Switching frequency	4...8 kHz
Maximum output frequency	100 Hz
Maximum voltage drop at rated load	8 %
Permissible voltage	480 V AC
Max current	1.20 x nominal current (duration = 60 s)
Width	380 mm
Height	760 mm
Depth	285 mm
Net weight	60 kg

Disclaimer: This documentation is not intended as a substitute for and is not to be used for determining suitability or reliability of these products for specific user applications

# Environment

IP degree of protection	IP20 IP21 (with kit VW3A53904)
Environmental characteristic	Biological pollution resistance class 3B1 conforming to IEC 60721-3-3 Chemical pollution resistance class 3C3 conforming to IEC 60721-3-3 Dust pollution resistance class 3S3 conforming to IEC 60721-3-3
Pollution degree	3 conforming to IEC 61800-5-1
Relative humidity	5...95 % without condensation
Ambient air temperature for operation	50...60 °C (with current derating 1.5 % per °C) -15...50 °C (without current derating)
Ambient air temperature for storage	-40...70 °C
Mechanical robustness	Shocks class 3M4 conforming to IEC 60721-3-3 Vibrations class 3M4 conforming to IEC 60721-3-3

# Packing Units

Unit Type of Package 1	PCE
Number of Units in Package 1	1
Package 1 Height	43.000 cm
Package 1 Width	44.500 cm
Package 1 Length	78.500 cm
Package 1 Weight	71.500 kg

## Sustainability

**Green Premium™ label** is Schneider Electric's commitment to delivering products with best-in-class environmental performance. Green Premium promises compliance with the latest regulations, transparency on environmental impacts, as well as circular and low-CO<sub>2</sub> products.

**Guide to assessing product sustainability** is a white paper that clarifies global eco-label standards and how to interpret environmental declarations.

[Learn more about Green Premium >](#)

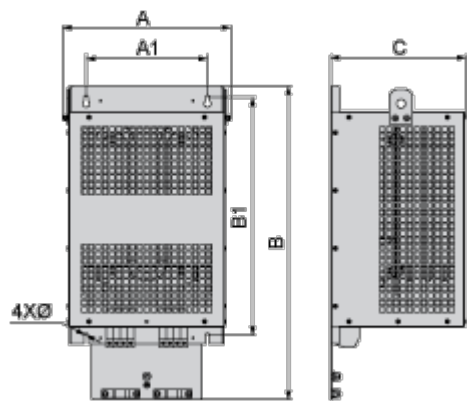
[Guide to assess a product's sustainability >](#)

## Well-being performance

✓	Reach Free Of Svhc	
✓	Toxic Heavy Metal Free	
✓	Mercury Free	
✓	Rohs Exemption Information	Yes
Eu Rohs Directive		Pro-active compliance (Product out of EU RoHS legal scope) <a href="#">EU RoHS Declaration</a>
China Rohs Regulation		<a href="#">China RoHS declaration</a>

Dimensions Drawings

Dimensions



Dimensions in mm

A	B	C	A1	B1	Ø
375	740	285	290	565	10

Dimensions in in.

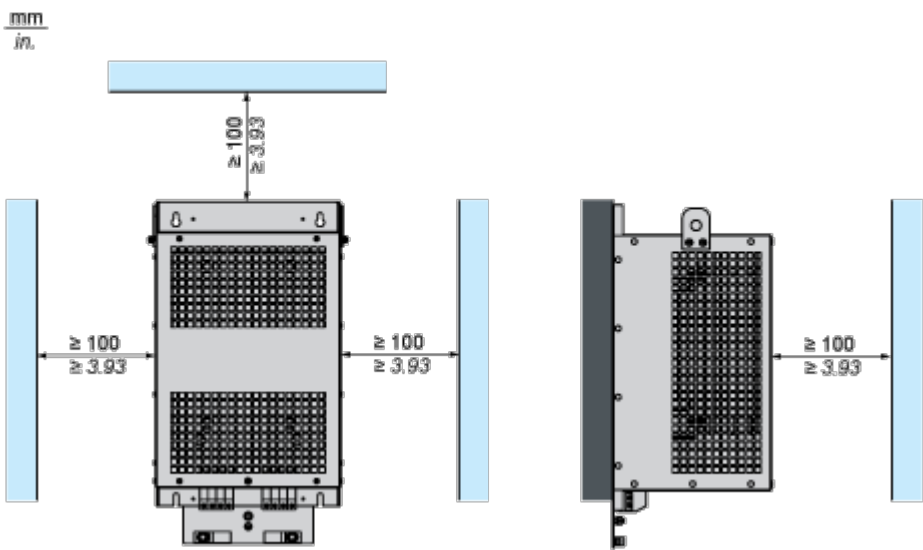
A	B	C	A1	B1	Ø
14.8	29.1	11.2	11.4	22.2	0.39

Mounting and Clearance

Mounting and Clearance

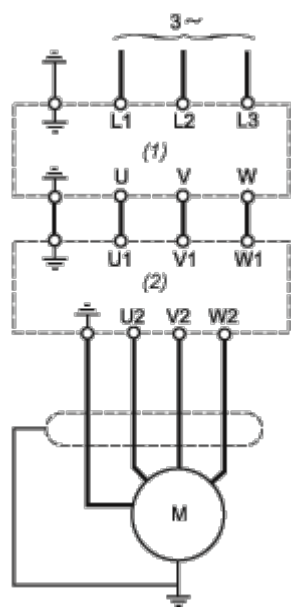


(1) Filter



Connections and Schema

Recommended Schema



- (1) Drive
- (2) Filter