

Product datasheet

Specifications



output sinus filter, Altivar, 6A, for variable speed drive

VW3A5401

Main

Product or component type	Sinus filter
Range compatibility	Altivar Process ATV900 Altivar Process ATV600
Product specific application	Output filter

Complementary

Maximum motor cable length	1000 m unshielded cable 500 m shielded cable
[In] rated current	6 A
Thermal losses	40 W at 4 kHz
Product compatibility	Variable speed drive ATV630 wall mount, motor: 0.75 kW, 380...480 V Variable speed drive ATV630 wall mount, motor: 1.5 kW, 380...480 V Variable speed drive ATV630 wall mount, motor: 2.2 kW, 380...480 V Variable speed drive ATV630 wall mount, motor: 0.75 kW, 200...240 V Variable speed drive ATV650 wall mount, motor: 0.75 kW, 380...480 V Variable speed drive ATV650 wall mount, motor: 1.5 kW, 380...480 V Variable speed drive ATV650 wall mount, motor: 2.2 kW, 380...480 V Variable speed drive ATV930 wall mount, motor: 0.75 kW, 380...480 V Variable speed drive ATV930 wall mount, motor: 1.5 kW, 380...480 V Variable speed drive ATV930 wall mount, motor: 2.2 kW, 380...480 V Variable speed drive ATV930 wall mount, motor: 0.75 kW, 200...240 V Variable speed drive ATV950 wall mount, motor: 0.75 kW, 380...480 V Variable speed drive ATV950 wall mount, motor: 1.5 kW, 380...480 V Variable speed drive ATV950 wall mount, motor: 2.2 kW, 380...480 V
Electrical connection	terminal block, connection capacity: 6 mm² / AWG 10
Operating altitude	<= 1000 m without current derating 1000...4000 m with current derating 1 % per 100 m
Switching frequency	4...8 kHz
Maximum output frequency	100 Hz
Maximum voltage drop at rated load	8 %
Permissible voltage	480 V AC
Max current	1.20 x nominal current (duration = 60 s)
Width	220 mm
Height	455 mm
Depth	210 mm
Net weight	10 kg

Environment

IP degree of protection	IP20 IP21 (with kit VW3A53901)
Environmental characteristic	Biological pollution resistance class 3B1 conforming to IEC 60721-3-3 Chemical pollution resistance class 3C3 conforming to IEC 60721-3-3 Dust pollution resistance class 3S3 conforming to IEC 60721-3-3
Pollution degree	2 conforming to IEC 61800-5-1
Relative humidity	5...95 % without condensation
Ambient air temperature for operation	50...60 °C (with current derating 1.5 % per °C) -15...50 °C (without current derating)
Ambient air temperature for storage	-40...70 °C
Mechanical robustness	Shocks class 3M4 conforming to IEC 60721-3-3 Vibrations class 3M4 conforming to IEC 60721-3-3

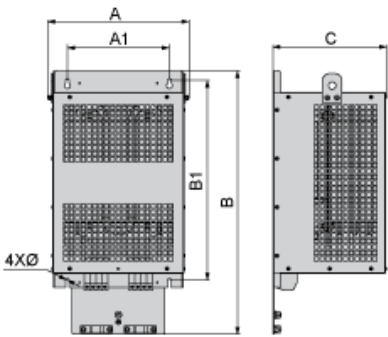
Packing Units

Unit Type of Package 1	PCE
Number of Units in Package 1	1
Package 1 Height	75.000 cm
Package 1 Width	60.000 cm
Package 1 Length	80.000 cm
Package 1 Weight	24.000 kg

Offer Sustainability

REACH Regulation	REACH Declaration
REACH free of SVHC	Yes
EU RoHS Directive	Pro-active compliance (Product out of EU RoHS legal scope) EU RoHS Declaration
Toxic heavy metal free	Yes
Mercury free	Yes
China RoHS Regulation	China RoHS declaration
RoHS exemption information	Yes

Dimensions



Dimensions in mm

A	B	C	A1	B1	Ø
210	445	210	160	351	7

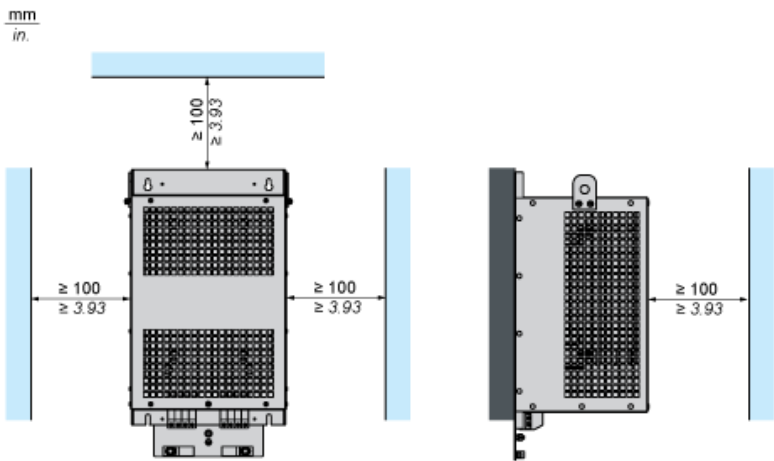
Dimensions in in.

A	B	C	A1	B1	Ø
8.3	17.5	8.3	6.3	13.8	0.28

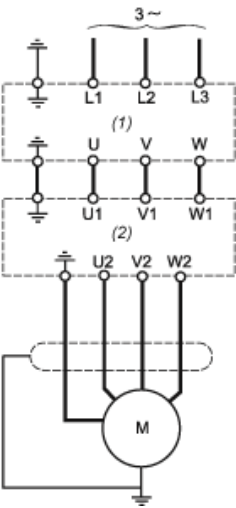
Mounting and Clearance



(1) Filter



Recommended Schema



- (1) Drive
- (2) Filter

Recommended replacement(s)