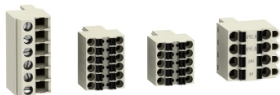


Product datasheet

Specifications

connector kit for for variable speed drive ATV340 size 3



VW3A34003

⚠ To be discontinued on: 31-Dec-2024

⚠ End-of-service on: 20-Nov-2023

⚠ Discontinued

Main

Range of product	Altivar
Accessory / separate part category	Spare part
Accessory / separate part type	Connection kit
Product compatibility	Variable speed drive ATV340, 11 kW, 380...480 V Variable speed drive ATV340, 15 kW, 380...480 V Variable speed drive ATV340, 18 kW, 380...480 V Variable speed drive ATV340, 22 kW, 380...480 V
accessory / separate part destination	Variable speed drive
Range compatibility	Altivar Machine ATV340

Complementary

Kit composition	Set of connectors
Net weight	0.04 kg

Packing Units

Unit Type of Package 1	PCE
Number of Units in Package 1	1
Package 1 Height	6.7 cm
Package 1 Width	13 cm
Package 1 Length	19.2 cm
Package 1 Weight	133 g
Unit Type of Package 2	S03
Number of Units in Package 2	10
Package 2 Height	30 cm
Package 2 Width	30 cm
Package 2 Length	40 cm
Package 2 Weight	1.957 kg

Disclaimer: This documentation is not intended as a substitute for and is not to be used for determining suitability or reliability of these products for specific user applications

Sustainability


Green Premium™ label is Schneider Electric's commitment to delivering products with best-in-class environmental performance. Green Premium promises compliance with the latest regulations, transparency on environmental impacts, as well as circular and low-CO₂ products.


Guide to assessing product sustainability is a white paper that clarifies global eco-label standards and how to interpret environmental declarations.

[Learn more about Green Premium >](#)

[Guide to assess a product's sustainability >](#)

Well-being performance

 Reach Free Of Svhc

 Rohs Exemption Information [Yes](#)

Eu Rohs Directive	Pro-active compliance (Product out of EU RoHS legal scope)
-------------------	--

China Rohs Regulation	China RoHS declaration
-----------------------	--