

# Product datasheet

Specifications



## TSX Micro - 28 I/O 24 V DC relay

TSXDMZ28DR

⚠ To be discontinued on: 31-Dec-2027

⚠ To be end-of-service on: 31-Dec-2027

⚠ Discontinued - Service only

### Main

Range of product	Modicon TSX Micro automation platform
Product or component type	Discrete relay I/O base
Discrete input number	16 screw terminal block
Discrete input voltage	24 V DC, discrete input logic: negative
Discrete input current	9 mA

### Complementary

Input voltage limits	<= 8 V at state 1
Current state 0 guaranteed	<= 1.5 mA
Current state 1 guaranteed	>= 2.5 mA
Input impedance	4 Ohm
Response time	0.1...7.5 ms input at state 0 to state 1 0.1...7.5 ms input at state 1 to state 0 < 10 ms output
Input compatibility	2-wire/3-wire proximity sensor
Load type	Resistive
Current consumption	160 mA positive 131 mA negative
Power dissipation in W	4.5 W
Output voltage limits	19...264 V AC 10...34 V DC
Contacts type and composition	NO
Power consumption in VA	50 VA 24 V AC-12 resistive 110 VA 48 V AC-12 resistive 220 VA 110 V AC-12 resistive 220 VA 220 V AC-12 resistive 24 VA 24 V AC-15 inductive 24 VA 48 V AC-15 inductive 220 VA 220 V AC-15 inductive 110 VA 110 V AC-15 inductive
Power consumption in W	40 W 24 V DC-12 resistive 24 W 24 V DC-13 inductive
Isolation voltage	1500 V for 1 s
Insulation resistance	>= 10 mOhm
Net weight	0.5 kg

Disclaimer: This documentation is not intended as a substitute for and is not to be used for determining suitability or reliability of these products for specific user applications

## Environment

Standards	IEC 1131-2 Type 1
[Ith] conventional free air thermal current	3 A

## Packing Units

Unit Type of Package 1	PCE
Number of Units in Package 1	1
Package 1 Height	5.5 cm
Package 1 Width	18.0 cm
Package 1 Length	26.0 cm
Package 1 Weight	582.0 g

## Contractual warranty

Warranty	18 months
----------	-----------

## Sustainability

**Green Premium™ label** is Schneider Electric's commitment to delivering products with best-in-class environmental performance. Green Premium promises compliance with the latest regulations, transparency on environmental impacts, as well as circular and low-CO<sub>2</sub> products.

**Guide to assessing product sustainability** is a white paper that clarifies global eco-label standards and how to interpret environmental declarations.

[Learn more about Green Premium >](#)

[Guide to assess a product's sustainability >](#)

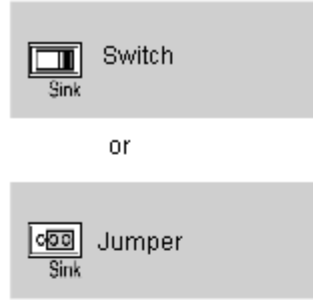
Eu Rohs Directive	Not applicable, out of EU RoHS legal scope
China Rohs Regulation	<a href="#">China RoHS declaration</a>
Weee	The product must be disposed on European Union markets following specific waste collection and never end up in rubbish bins
Circular Nature	Refurbished

Connections and Schema

Sensors/Inputs and Actuators/Outputs Connections

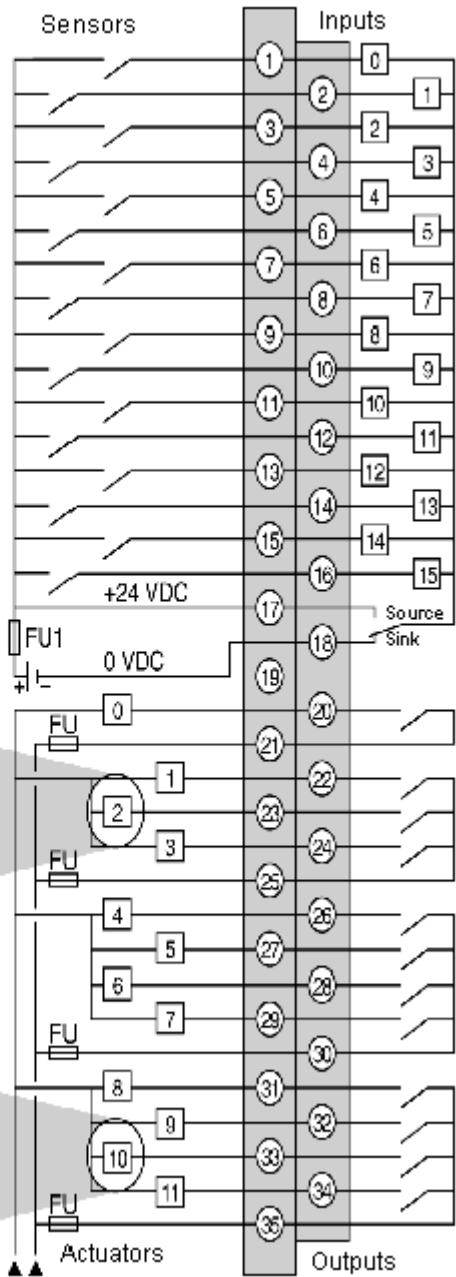
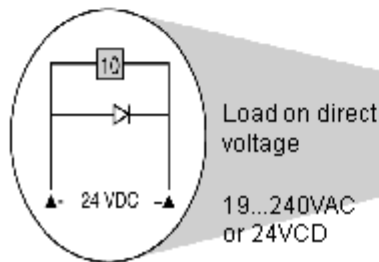
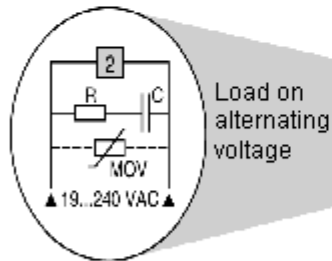
Wiring Diagrams

Positive logic input (Sink)



Inputs hardware configuration

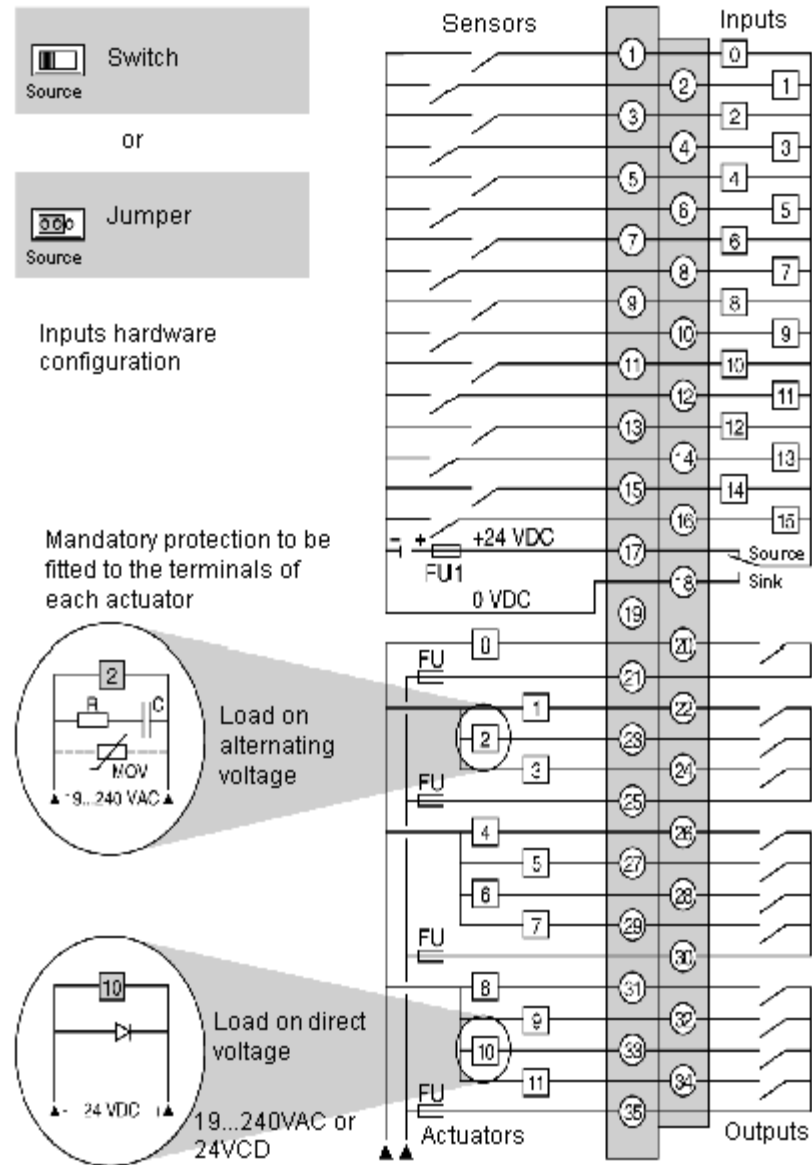
Mandatory protection to be fitted to the terminals of each actuator



FU1 = 0.5A fast-blow fuse.

FU = Fast-blow fuses to be calibrated according to the load.

Negative logic input (Source)



FU1 = 0.5A fast-blow fuse.  
FU = Fast-blow fuses to be calibrated according to the load