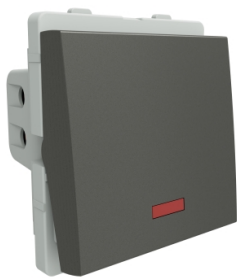


Product datasheet

Specifications



DP switch, Livia, 32A, with indicator lamp, painted grey

P1132_PG

Main

Range	Livia
Device application	Control
Product or component type	Switch
device presentation	Mechanism with fixing frame
Colour tint	Grey

Complementary

Device mounting	Flush
Switch function	2-pole
Rated current	32 A
[Ue] rated operational voltage	110/240 V AC
Fixing mode	By 2 screws
Material	PC (polycarbonate) matt
Local signalling	locator light
Embedding depth	24 mm
Surface treatment	Antibacterial
Height	54 mm
Width	22.5 mm
Depth	36.5 mm

Environment

IP degree of protection	IP2X
Standards	IS 3854

Packing Units

Unit Type of Package 1	PCE
Number of Units in Package 1	1
Package 1 Height	4.5 cm
Package 1 Width	6 cm
Package 1 Length	15.5 cm
Package 1 Weight	47 g
Unit Type of Package 2	BB1

Disclaimer: This documentation is not intended as a substitute for and is not to be used for determining suitability or reliability of these products for specific user applications

Number of Units in Package 2	10
Package 2 Height	6 cm
Package 2 Width	10.5 cm
Package 2 Length	21.5 cm
Package 2 Weight	525 g
Unit Type of Package 3	CAR
Number of Units in Package 3	100
Package 3 Height	32.5 cm
Package 3 Width	22.5 cm
Package 3 Length	24 cm
Package 3 Weight	5.75 kg

Sustainability

Green Premium™ label is Schneider Electric’s commitment to delivering products with best-in-class environmental performance. Green Premium promises compliance with the latest regulations, transparency on environmental impacts, as well as circular and low-CO₂ products.

Guide to assessing product sustainability is a white paper that clarifies global eco-label standards and how to interpret environmental declarations.

[Learn more about Green Premium >](#)

[Guide to assess a product’s sustainability >](#)



Sustainable Packaging

Resource performance

 Sustainable Packaging

Well-being performance

 Rohs Exemption Information [Yes](#)

Reach Regulation	REACH Declaration
------------------	-----------------------------------

Eu Rohs Directive	Compliant with Exemptions
-------------------	---------------------------

China Rohs Regulation	China RoHS declaration Product out of China RoHS scope. Substance declaration for your information
-----------------------	---