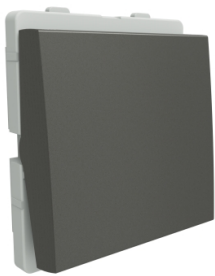


# Product datasheet

Specifications



## Switch, Livia, 1 way, 16A, painted grey

P1121\_PG

### Main

Range	Livia
Device application	Control
Product or component type	Switch
device presentation	Mechanism with fixing frame
Colour tint	Grey

### Complementary

Device mounting	Flush
Switch function	1-pole
Rated current	16 A
[Ue] rated operational voltage	110/240 V AC
Fixing mode	By 2 screws
Material	PC (polycarbonate) matt
Embedding depth	24 mm
Surface treatment	Antibacterial
Height	54 mm
Width	22.5 mm
Depth	36.5 mm

### Environment

IP degree of protection	IP2X
Standards	IS 3854

### Packing Units

Unit Type of Package 1	PCE
Number of Units in Package 1	1
Package 1 Height	4 cm
Package 1 Width	5.5 cm
Package 1 Length	14.2 cm
Package 1 Weight	26 g
Unit Type of Package 2	BB1
Number of Units in Package 2	10

Disclaimer: This documentation is not intended as a substitute for and is not to be used for determining suitability or reliability of these products for specific user applications

Package 2 Height	6 cm
Package 2 Width	10.5 cm
Package 2 Length	21.5 cm
Package 2 Weight	315 g
Unit Type of Package 3	CAR
Number of Units in Package 3	100
Package 3 Height	32.5 cm
Package 3 Width	22.5 cm
Package 3 Length	24 cm
Package 3 Weight	3.65 kg

# Sustainability

**Green Premium™ label** is Schneider Electric’s commitment to delivering products with best-in-class environmental performance. Green Premium promises compliance with the latest regulations, transparency on environmental impacts, as well as circular and low-CO<sub>2</sub> products.

**Guide to assessing product sustainability** is a white paper that clarifies global eco-label standards and how to interpret environmental declarations.


[Learn more about Green Premium >](#)

[Guide to assess a product’s sustainability >](#)



Sustainable Packaging

## Resource performance

 Sustainable Packaging

## Well-being performance

 Rohs Exemption Information [Yes](#)

Reach Regulation	<a href="#">REACH Declaration</a>
------------------	-----------------------------------

Eu Rohs Directive	Compliant with Exemptions
-------------------	---------------------------

China Rohs Regulation	<a href="#">China RoHS declaration</a> Product out of China RoHS scope. Substance declaration for your information
-----------------------	---