

Product data sheet

Specifications



Circuit breaker, EasyPact MVS, 3 Poles, 4000A, 50kA, MDO, ET6, drawout, manual

MVS40N3MW6L

Main

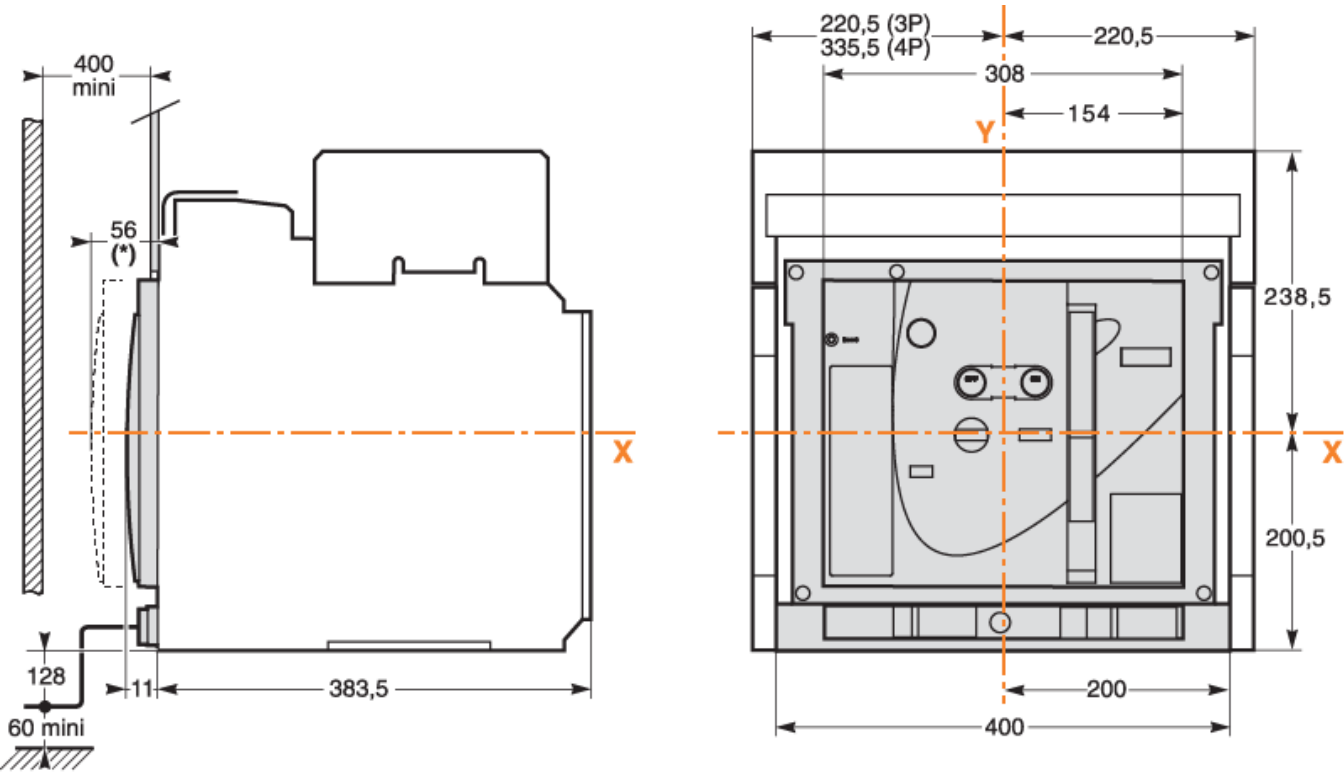
| | |
|--------------------------------|---|
| Range | EasyPact |
| Product name | MVS40N |
| Device short name | MVS40N |
| Product or component type | Circuit breaker |
| Device application | Distribution |
| Poles description | 3P |
| Protected poles description | 3P 3d |
| [In] rated current | 4000 A at 40 °C |
| Network type | AC |
| [Ue] rated operational voltage | 690 V AC 50/60 Hz conforming to IEC 60947-2 |
| Breaking capacity code | N |
| Suitability for isolation | Yes conforming to IEC 60947-2 |
| Utilisation category | Category B |
| Trip unit name | ET6G |
| Trip unit technology | Electronic |
| Trip unit rating | 4000 A |

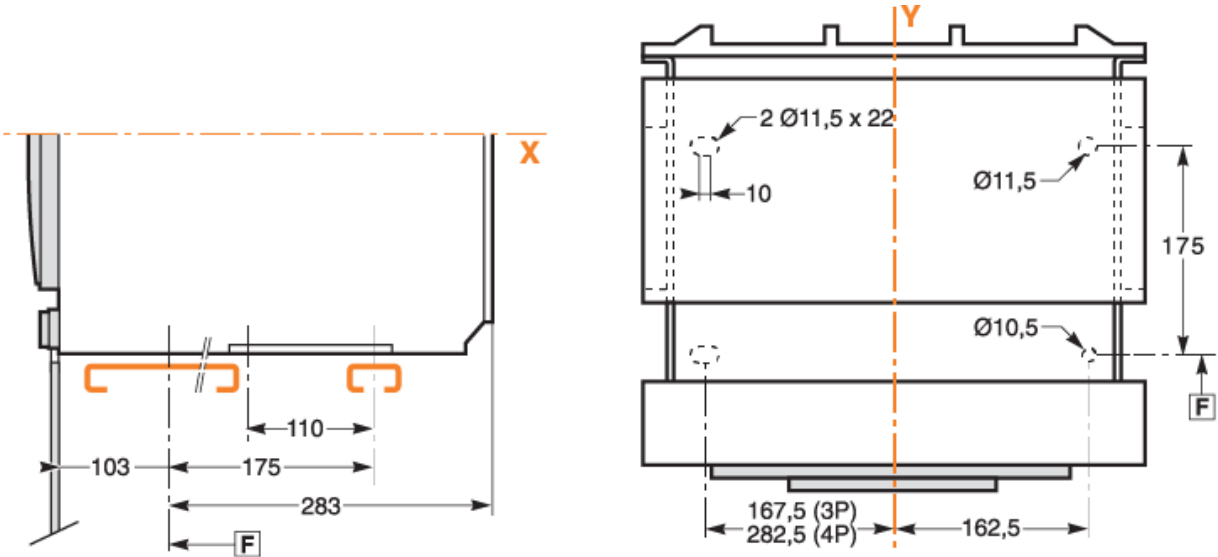
Complementary

| | |
|--|--|
| Network frequency | 50/60 Hz |
| Control type | Manually operated |
| Mounting mode | Drawout |
| Mounting support | Rail Base plate |
| Connection position | Horizontal Vertical |
| Location of connection | Rear |
| [Ui] rated insulation voltage | 1000 V AC 50/60 Hz conforming to IEC 60947-2 |
| [Uimp] rated impulse withstand voltage | 12 kV conforming to IEC 60947-2 |
| Circuit breaker CT rating | 4000 A |
| Breaking capacity | 55 kA Icu at 220...440 V AC 50/60 Hz conforming to IEC 60947-2 |

| | |
|--|--|
| [Ics] rated service breaking capacity | 55 kA (Ics) at 220...440 V AC 50/60 Hz conforming to IEC 60947-2 |
| Mechanical durability | 20000 cycles (with maintenance) conforming to IEC 60947-2 10000 cycles (without maintenance) conforming to IEC 60947-2 |
| Electrical durability | Category B: 5000 cycles 440 V AC 50/60 Hz without maintenance conforming to IEC 60947-2 Category B: 2500 cycles 690 V AC 50/60 Hz without maintenance conforming to IEC 60947-2 |
| Connection pitch | 115 mm without spreader |
| Contact position indicator | Yes |
| [Icm] rated short-circuit making capacity | 121 kA (Icm) at 220...440 V AC 50/60 Hz conforming to IEC 60947-2 |
| [Icw] rated short-time withstand current | 42 kA (1 s) at 690 V AC 50/60 Hz conforming to IEC 60947-2 55 kA (1 s) at 220...440 V AC 50/60 Hz conforming to IEC 60947-2 30 kA (3 s) at 440/690 V AC 50/60 Hz conforming to IEC 60947-2 |
| Trip unit protection functions | LSIG |
| Protection type | Earth fault Instantaneous short-circuit protection Overload protection (long time) Short time short-circuit protection |
| Fault indication | Short-circuit Overload Internal fault Earth fault |
| Long time pick-up adjustment type Ir | Adjustable 9 settings |
| Long time pick-up adjustment range | 0.4...1 x In |
| Long time delay adjustment type | Adjustable 9 settings |
| [Tr] long-time delay adjustment range | 0.5...24 s at 6 x Ir |
| Short-time pick-up adjustment type Isd | Adjustable 9 settings |
| [Isd] short-time pick-up adjustment range | 1.5...10 x Ir |
| Short-time delay adjustment type | Adjustable 5 settings |
| [Tsd] short-time delay adjustment range | 100...400 ms |
| Instantaneous pick-up adjustment type Ii | Adjustable 9 settings |
| Instantaneous pick-up adjustment range | 2...15 x In Off |
| Ground-fault pick-up adjustment type | Adjustable 9 settings |
| Ground-fault time delay adjustment type -tg | Adjustable 5 settings |
| [Tg] ground-fault time delay adjustment range | 100...400 ms |
| [Ig] ground-fault pick-up adjustment range | 500...1200 A |
| Zone selective interlocking ZSI | With |
| Current sensor rating range | 1000/4000 A |
| Maximum breaking time | 25 ms |
| Maximum closing response time | 70 ms |
| Height | 439 mm |
| Width | 441 mm |

| | |
|---------------------------------------|---|
| Depth | 395 mm |
| Net weight | 90 kg |
| Environment | |
| Standards | IEC 60947-2 |
| Product certifications | CCC CCS IEC GOST |
| Pollution degree | 4 conforming to IEC 60664-1 |
| IP degree of protection | IP40 |
| Ambient air temperature for operation | -5...70 °C |
| Ambient air temperature for storage | -40...85 °C without control unit -25...85 °C with control unit |
| Packing Units | |
| Unit Type of Package 1 | PCE |
| Number of Units in Package 1 | 1 |
| Package 1 Height | 42.0 cm |
| Package 1 Width | 35.0 cm |
| Package 1 Length | 50.0 cm |
| Package 1 Weight | 38.0 kg |
| Offer Sustainability | |
| Sustainable offer status | Green Premium product |
| REACH Regulation | REACH Declaration |
| EU RoHS Directive | Compliant EU RoHS Declaration |
| Mercury free | Yes |
| China RoHS Regulation | China RoHS declaration Product out of China RoHS scope. Substance declaration for your information |
| RoHS exemption information | Yes |
| Environmental Disclosure | Product Environmental Profile |
| Circularity Profile | End of Life Information |
| PVC free | Yes |
| Contractual warranty | |
| Warranty | 18 months |







(1)

| $I_g = I_n \times \dots$ | A | B | C | D | E | F | G | H | J |
|---|-----|-----|-----|-----|-----|-----|------|------|------|
| $I_n \leq 400 \text{ A}$ | 0.3 | 0.3 | 0.4 | 0.5 | 0.6 | 0.7 | 0.8 | 0.9 | 1 |
| $400 \text{ A} < I_n \leq 1000 \text{ A}$ | 0.2 | 0.3 | 0.4 | 0.5 | 0.6 | 0.7 | 0.8 | 0.9 | 1 |
| $I_n \geq 1250 \text{ A}$ | 500 | 640 | 720 | 800 | 880 | 960 | 1040 | 1120 | 1200 |



(1)

| lg = ln x... | A | B | C | D | E | F | G | H | J |
|---------------------|-----|-----|-----|-----|-----|-----|------|------|------|
| ln ≤ 400 A | 0.3 | 0.3 | 0.4 | 0.5 | 0.6 | 0.7 | 0.8 | 0.9 | 1 |
| 400 A < ln ≤ 1000 A | 0.2 | 0.3 | 0.4 | 0.5 | 0.6 | 0.7 | 0.8 | 0.9 | 1 |
| ln ≥ 1250A | 500 | 640 | 720 | 800 | 880 | 960 | 1040 | 1120 | 1200 |

Recommended replacement(s)