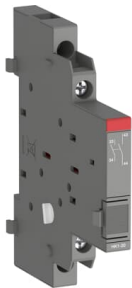




PRODUCT-DETAILS

HK1-20

HK1-20 Aux.-contact 2 NO



General Information

Extended Product Type	HK1-20
Product ID	1SAM201902R1002
EAN	4013614320378
Catalog Description	HK1-20 Aux.-contact 2 NO
Long Description	Auxiliary contacts HK1 change position with the main contacts of the manual motor starter. They are mounted laterally on the right side of manual motor starters MS116, MS132 or MS165. Auxiliary contacts HK1 are available as normally open or normally closed contacts.

Ordering

Minimum Order Quantity	2 piece
Customs Tariff Number	85365080

Popular Downloads

Data Sheet, Technical Information	1SBC100214C0202
Instructions and Manuals	2CDC131011M6802 2CDC131034M6801 2CDC131022M6802

	2CDC131120M6801
	2CDC131081M6801
	2CDC131082M6801
Instructions and Manuals (Part 3)	1SBC100214C0202
CAD Dimensional Drawing	2CDC001079B0201

Dimensions

Product Net Width	9 mm
Product Net Height	90 mm
Product Net Depth / Length	78.5 mm
Product Net Weight	0.035 kg

Technical

Rated Operational Voltage	690 V AC 600 V DC Main Circuit 690 V
Rated Impulse Withstand Voltage (U_{imp})	Auxiliary Circuit 6 kV
Rated Insulation Voltage (U_i)	690 V
Number of Auxiliary Contacts NC	0
Number of Auxiliary Contacts NO	2
Degree of Protection	IP20
Electrical Durability	100000 cycle
Mechanical Durability	100000 cycle
Terminal Type	Screw Terminals
Connecting Capacity Auxiliary Circuit	Flexible with Ferrule 1/2x 0.75 ... 1.5 mm ² Flexible with Insulated Ferrule 1/2x 0.75 ... 1.5 mm ² Flexible 1/2x 0.75 ... 1.5 mm ² Rigid 1/2x 1 ... 1.5 mm ²
Tightening Torque	Auxiliary Circuit 0.8 ... 1.2 N·m
Wire Stripping Length	Auxiliary Circuit 8 mm
Recommended Screw Driver	M3 Pozidriv 2
Mounting Position	1 ... 6

Technical UL/CSA

Maximum Operating Voltage UL/CSA	Main Circuit 600 V AC
Connecting Capacity Auxiliary Circuit UL/CSA	Flexible 1/2x 16-14 AWG Stranded 1/2x 16-14 AWG
Tightening Torque UL/CSA	Auxiliary Circuit 7 in·lb
Contact Rating UL/CSA	B600 Q600

Environmental

Ambient Air Temperature	Operation -25 ... +60 °C Storage -50 ... +80 °C
Resistance to Shock acc. to IEC 60068-2-27	11 ms Pulse 25g
Resistance to Vibrations	5g 3 ... 150 Hz

Material Compliance

Conflict Minerals Reporting Template (CMRT)	9AKK108467A5658
REACH Declaration	1SAA963005-4502
RoHS Information	1SAA963006-4502
RoHS Status	Following EU Directive 2011/65/EU and Amendment 2015/863 July 22, 2019
Toxic Substances Control Act - TSCA	2CMT2023-006539
WEEE B2C / B2B	Business To Business
WEEE Category	5. Small Equipment (No External Dimension More Than 50 cm)

Certificates and Declarations

A2L Certificate - IEC	1SAA963000-4601
ABS Certificate	1SAA963001-0101
BV Certificate	1SAA963002-0201
CB Certificate	1SAA963004-2002
CCC Certificate	2024010305656671
CQC Certificate	CQC2017010304032778
cUL Certificate	cUL_E137861
Declaration of Conformity - CCC	2020980304001252
Declaration of Conformity - CE	1SAD101100-3410
Declaration of Conformity - UKCA	1SAD201100-3410
DNV GL Certificate	1SAA963001-0304
LR Certificate	1SAA963001-0502 1SAA963001-0501 1SAA963000-0505 1SAA918001-0501
RINA Certificate	1SAA963002-0802
UL Certificate	UL_E137861

Container Information

Package Level 1 Units	box 2 piece
Package Level 1 Width	25 mm
Package Level 1 Depth / Length	93 mm
Package Level 1 Height	80 mm
Package Level 1 Gross Weight	0.08 kg
Package Level 1 EAN	4013614481468
Package Level 2 Units	carton 160 piece
Package Level 2 Width	280 mm
Package Level 2 Depth / Length	395 mm
Package Level 2 Height	210 mm
Package Level 2 Gross Weight	6.775 kg
Package Level 2 EAN	4013614522789

External Classifications and Standards

Object Classification Code	Q
ETIM 4	EC002498 - Accessories for low-voltage switch technology

ETIM 5	EC000041 - Auxiliary contact block
ETIM 6	EC000041 - Auxiliary contact block
ETIM 7	EC000041 - Auxiliary contact block
ETIM 8	EC000041 - Auxiliary contact block
eClass	V11.0 : 27371302
UNSPSC	39121522
IDEA Granular Category Code (IGCC)	4743 >> Auxiliary contact block
E-Number (Finland)	3706017
E-Number (Norway)	4364280
E-Number (Sweden)	3112007

Categories

Low Voltage Products and Systems → Circuit Breakers → Manual Motor Starters
Low Voltage Products and Systems → Control Products → Manual Motor Starters → Manual Motor Starters

