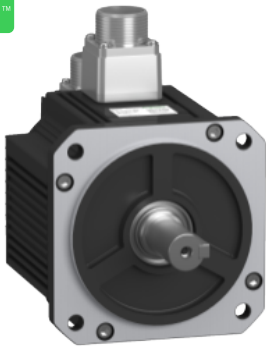


# Product data sheet

Specifications



servo motor BCH16, 130 mm,  
shaft 22 mm, 1.5kW, High inertia,  
2000rpm

BCH16HM15230A6C2

## Main

Range compatibility	Easy Lexium 16
Product or component type	Servo motor
Device short name	BCH16

## Complementary

Maximum mechanical speed	3000 rpm
[Us] rated supply voltage	220 V
Network number of phases	3 phases
Continuous stall current	7.9 A
Continuous stall torque	7.16 N.m for LXM16D at 14.43 A, 220 V, single phase
Continuous power	850 W
Peak stall torque	21.48 N.m for LXM16D at 14.43 A, 220 V, single phase
Nominal output power	850 W for LXM16D at 14.43 A, 220 V, single phase
Nominal torque	5.39 N.m for LXM16D at 14.43 A, 220 V, single phase
Nominal speed	1500 rpm for LXM16D at 14.43 A, 220 V, single phase
Maximum current Irms	24.9 A for LXM16D at 1.5 kW, 220 V
Maximum permanent current	18.1 A
Product compatibility	LXM16D motion servo motors motor at 0.85 kW, 220 V, single phase
Shaft end	Parallel key
Second shaft	Without second shaft end
Shaft diameter	22 mm
Shaft length	35 mm
Key width	8 mm
Feedback type	2500 incremental encoder
Holding brake	Without
Holding torque	15.0 N.m
Mounting support	Asian standard flange
Motor flange size	130 mm
Electrical connection	Connector MIL

Torque constant	0.75 N.m/A at 20 °C
Back emf constant	51.7 V/krpm at 20 °C
Rotor inertia	14.08 kg.cm²
Stator resistance	0.65 Ohm at 20 °C
Stator inductance	5.5 mH at 20 °C
Stator electrical time constant	8.46 ms at 20 °C
Maximum radial force Fr	498.82 N at 2000 rpm
Maximum axial force Fa	176.4 N
Type of cooling	Natural convection
Length	154.3 mm
Centring collar diameter	110 mm
Centring collar depth	6 mm
Number of mounting holes	4
Mounting holes diameter	9 mm
Circle diameter of the mounting holes	145 mm
Distance shaft shoulder-flange	50 mm
Width	130 mm
Height	183.4 mm
Depth	154.3 mm
Net weight	6.5 kg

## Environment

IP degree of protection	IP65 IM B5, IM V1 IP65 IM V3
Ambient air temperature for operation	0...40 °C

## Packing Units

Unit Type of Package 1	PCE
Number of Units in Package 1	1
Package 1 Height	27.5 cm
Package 1 Width	18 cm
Package 1 Length	36 cm
Package 1 Weight	7.91 kg

## Offer Sustainability

Sustainable offer status	Green Premium product
REACH Regulation	<a href="#">REACH Declaration</a>
REACH free of SVHC	Yes
EU RoHS Directive	Compliant <a href="#">EU RoHS Declaration</a>
Mercury free	Yes
China RoHS Regulation	<a href="#">China RoHS declaration</a>
RoHS exemption information	<a href="#">Yes</a>

Environmental Disclosure	<a href="#">Product Environmental Profile</a>
Circularity Profile	<a href="#">End of Life Information</a>
California proposition 65	WARNING: This product can expose you to chemicals including: Lead and lead compounds, which is known to the State of California to cause cancer and birth defects or other reproductive harm. For more information go to <a href="http://www.P65Warnings.ca.gov">www.P65Warnings.ca.gov</a>

Recommended replacement(s)