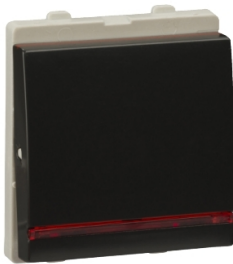


# Product datasheet

Specifications



## Opale DP switch 20A CG

AAKY1286

⚠ Discontinued on: 30-Jun-2023

⚠ To be discontinued

### Main

Range	Opale
Product or component type	Switch
Device application	Control
device presentation	Mechanism
Light source	Neon, red
Colour tint	Coke grey

### Complementary

Technology type	Electromechanical
Device mounting	Flush
Number of modules	2 modules
Actuator	Rocker
Switch function	2-pole
Rated current	20 A
[Ue] rated operational voltage	240 V
Lamp function	Indicator
Network type	AC
Network frequency	50 Hz
Fixing mode	By captive screws
Connections - terminals	Shrouded terminals
Material	ABS + PC: front cover PA6: base cover
Height	48 mm
Width	42 mm
Depth	35.6 mm

### Environment

Standards	IS 3854:1997/A1
IP degree of protection	IP20
Ambient air temperature for operation	-5...35 °C
Relative humidity	10...95 %

Disclaimer: This documentation is not intended as a substitute for and is not to be used for determining suitability or reliability of these products for specific user applications

Environmental characteristic	Indoor use
------------------------------	------------

## Packing Units

Unit Type of Package 1	PCE
Number of Units in Package 1	1
Package 1 Height	4.2 cm
Package 1 Width	4.2 cm
Package 1 Length	4 cm
Package 1 Weight	34 g
Unit Type of Package 2	BB1
Number of Units in Package 2	120
Package 2 Height	250 cm
Package 2 Width	265 cm
Package 2 Length	335 cm
Package 2 Weight	4085 g

Sustainability



**Green Premium™ label** is Schneider Electric’s commitment to delivering products with best-in-class environmental performance. Green Premium promises compliance with the latest regulations, transparency on environmental impacts, as well as circular and low-CO<sub>2</sub> products.

**Guide to assessing product sustainability** is a white paper that clarifies global eco-label standards and how to interpret environmental declarations.

[Learn more about Green Premium >](#)

[Guide to assess a product’s sustainability >](#)



Transparency   RoHS/REACH

Well-being performance

✓	Reach Free Of Svhc	
✓	Toxic Heavy Metal Free	
✓	Mercury Free	
✓	Rohs Exemption Information	Yes

Certifications & Standards

Reach Regulation	<a href="#">REACH Declaration</a>
Eu Rohs Directive	Compliant <a href="#">EU RoHS Declaration</a>
China Rohs Regulation	<a href="#">China RoHS declaration</a> Pro-active China RoHS declaration (out of China RoHS legal scope)
Environmental Disclosure	<a href="#">Product Environmental Profile</a>
Circularity Profile	No need of specific recycling operations