



Flashlight element, with integrated LED, blue, 115 V AC, Diameter 70 mm

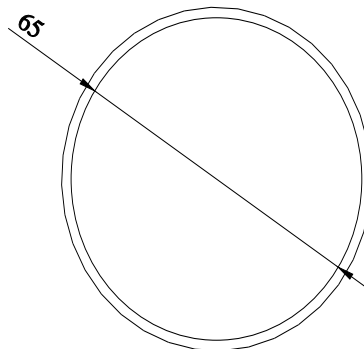
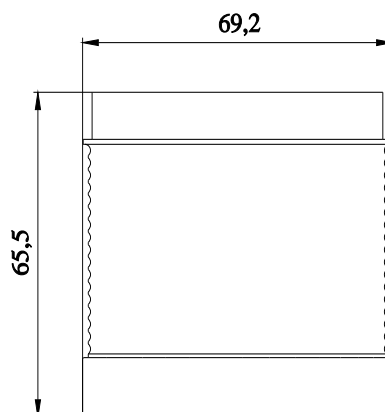
product brand name	SIRIUS
product designation	Repeated-flash light element
design of the product	including light sources
General technical data	
type of voltage of the operating voltage	AC
operating voltage	
• 1 at AC at 50 Hz rated value	115 V
• 1 at AC at 60 Hz rated value	115 V
relative positive tolerance of the operating voltage	10 %
relative negative tolerance of the operating voltage	-10 %
consumed current maximum	25 mA
reference code according to EN 61346-2	P
Lamp	
product component light source	Yes
type of light source	LED
service life of LED	100 000 h
design of the optical signal	blinklight
light intensity	0.08 cd
light intensity	0.06 ... 0.12 cd
flashing frequency	1 Hz
Enclosure	
height	65.5 mm
width	70 mm
outer diameter of the signal column element	70 mm
material	PC
color	blue
fastening method	Bayonet
protection class IP	IP65
Ambient conditions	
ambient temperature during operation	-20 ... +50 °C
Approvals Certificates	
General Product Approval	EMV



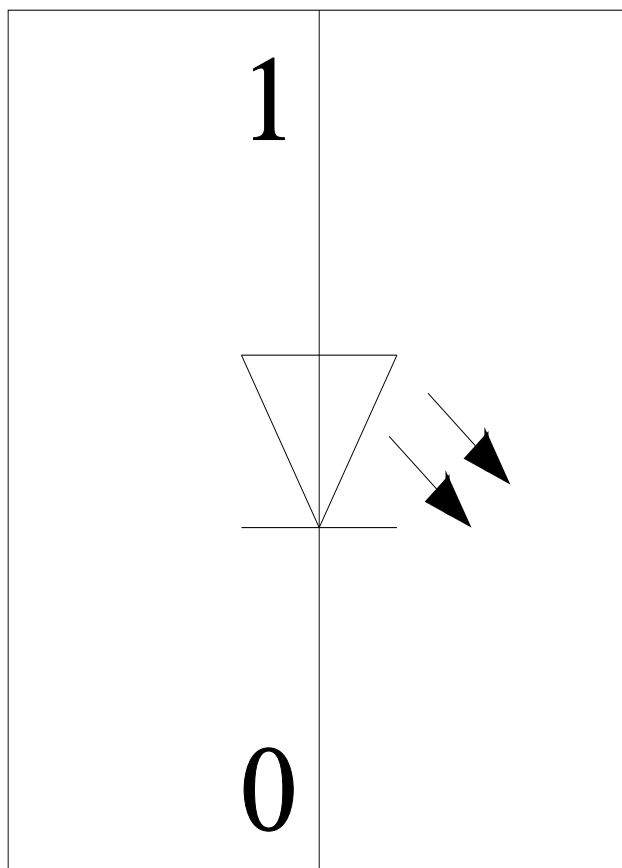
[Confirmation](#)



other	Environment
-------	-------------

Further information**Information on the packaging**<https://support.industry.siemens.com/cs/ww/en/view/109813875>**Information- and Downloadcenter (Catalogs, Brochures,...)**<https://www.siemens.com/ic10>**Industry Mall (Online ordering system)**<https://mall.industry.siemens.com/mall/en/en/Catalog/product?mlfb=8WD4440-5BF>**Cax online generator**<http://support.automation.siemens.com/WW/CAXorder/default.aspx?lang=en&mlfb=8WD4440-5BF>**Service&Support (Manuals, Certificates, Characteristics, FAQs,...)**<https://support.industry.siemens.com/cs/ww/en/ps/8WD4440-5BF>**Image database (product images, 2D dimension drawings, 3D models, device circuit diagrams, EPLAN macros, ...)**http://www.automation.siemens.com/bilddb/cax_de.aspx?mlfb=8WD4440-5BF&lang=en

-P



last modified:

3/12/2024 