



circuit breaker 3VT2 high breaking capacity Icu=65kA, 415V AC 4-pole; circuit breaker w/o Electronic Trip Unit N connected without auxiliary release without auxiliary/alarm switch

Model	
product brand name	SETRON
product designation	3VT1_5 molded case circuit breakers
design of the actuating element	toggle handle
type of the driving mechanism motor drive	No
General technical data	
number of poles	4
size of the circuit-breaker	3VT2
mechanical service life (operating cycles) typical	30 000
electrical endurance (operating cycles) typical	3 000
utilization category	A
performance class for circuit breaker	H
operating frequency maximum	120 1/h
Voltage	
surge voltage resistance rated value	8 kV
Protection class	
protection class IP	IP40
Dissipation	
power loss [W] for rated value of the current at AC in hot operating state per pole	6 W
Main circuit	
operating frequency	
• 1 rated value	50 Hz
• 2 rated value	60 Hz
operational current rated value	250 A
Auxiliary circuit	
number of CO contacts for auxiliary contacts	0
number of NC contacts for auxiliary contacts	0
number of NO contacts for auxiliary contacts	0
Suitability	
suitability for use	Contact unit without release
• disconnecting means	Yes
Product details	
product component	
• trip indicator	No
• auxiliary switch	No
• voltage trigger	No
• undervoltage release	No
• undervoltage release with leading contact	No
product extension optional motor drive	Yes

Product function	
product function	
• grounding protection	No
• for neutral conductors short-circuit and overload proof	No
• phase failure detection	No
• overload protection	No
Short circuit	
operating short-circuit current breaking capacity (Ics)	
• at 240 V rated value	50 kA
• at 415 V rated value	36 kA
• at 500 V rated value	13 kA
• at 690 V rated value	8 kA
maximum short-circuit current breaking capacity (Icu)	
• at 240 V rated value	100 kA
• at 415 V rated value	65 kA
• at 500 V rated value	25 kA
• at 690 V rated value	13 kA
Connections	
arrangement of electrical connectors for main current circuit	front side
type of electrical connection for main current circuit	screw-type terminals
Mechanical Design	
height	225 mm
width	140 mm
depth	117 mm
fastening method	fixed mounting
mounting position	with vertical mounting surface +/-180° rotatable, with vertical mounting surface +/- 30° tiltable to the front and back
net weight	4.1 kg
Environmental conditions	
ambient temperature during operation	
• minimum	-40 °C
• maximum	70 °C
ambient temperature during storage	
• minimum	-40 °C
• maximum	70 °C
Certificates	
reference code	
• according to EN 61346-2	Q
• according to IEC 81346-2	Q

Approvals Certificates	
General Product Approval	Test Certificates



[Confirmation](#)



[Type Test Certificates/Test Report](#)

other

[Miscellaneous](#)

[Confirmation](#)

#### Further information

Information on the packaging

<https://support.industry.siemens.com/cs/ww/en/view/109813875>

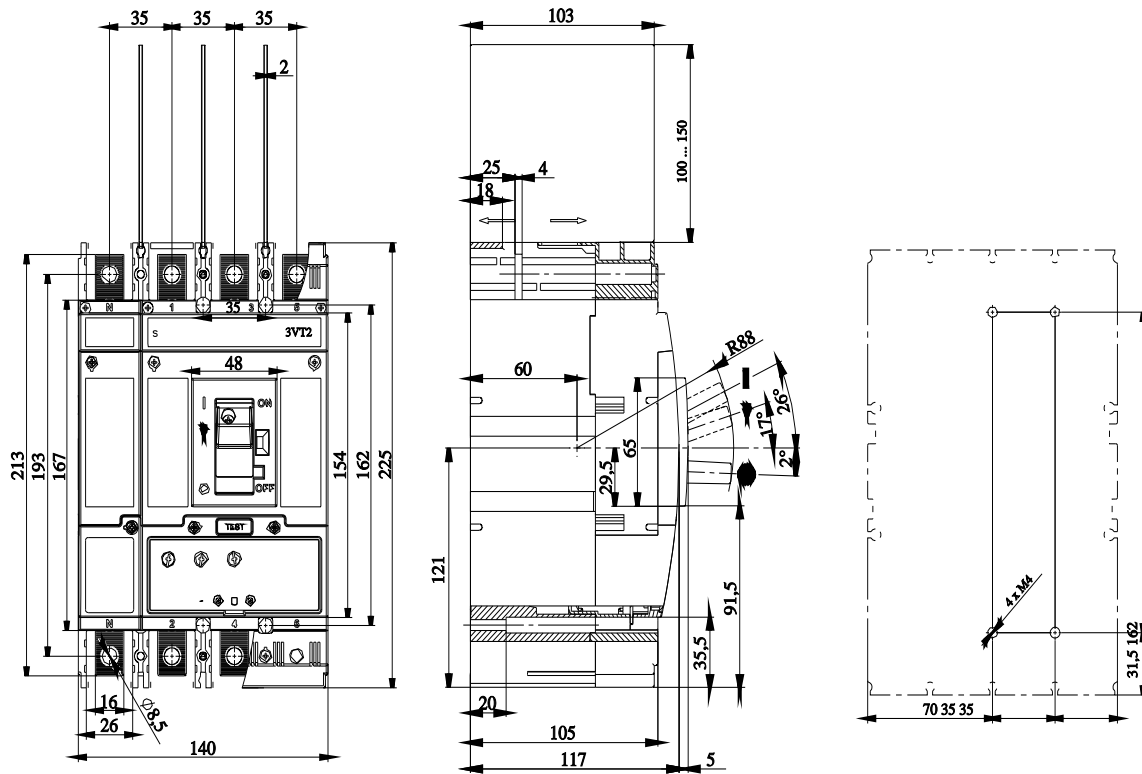
Information- and Downloadcenter (Catalogs, Brochures,...)

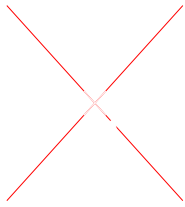
<http://www.siemens.com/lowvoltage/catalogs>

Industry Mall (Online ordering system)

<https://mall.industry.siemens.com/mall/en/en/Catalog/product?mlfb=3VT2725-3AA46-0AA0>

Service&Support (Manuals, Certificates, Characteristics, FAQs,...)





---

last modified:

8/14/2021 

