



circuit breaker 3VJ1 IEC framesize 3VJ12 250A line protection FTFM 4-pole  
Icu=36kA@415V Ics=75% Icu In=200A overload protection Ir=200A short-circuit  
protection Ii=10 x In Screw connection

| Model   |                             |
|---|-----------------------------|
| product designation   | Molded Case Circuit Breaker |
| design of the product   | Line protection             |
| design of the overcurrent release   | FTFM                        |
| protection function of the overcurrent release  | LI                          |
| number of poles   | 4                           |
| General technical data  |                             |
| insulation voltage / rated value  | 1 000 V                     |
| operating voltage / at AC / rated value   | 415 V                       |
| power loss [W] / maximum  | 42 W                        |
| power loss [W] / for rated value of the current / at AC / in hot operating state / per pole | 10.5 W                      |
| mechanical service life (operating cycles) / typical  | 15 000                      |
| electrical endurance (operating cycles) / at AC-1 / at 380/415 V                            | 5 000                       |
| ground-fault monitoring version   | without                     |
| Net Weight  | 2.58 kg                     |
| Current   |                             |
| continuous current / rated value  | 200 A                       |
| operational current   |                             |
| • at 40 °C  | 200 A                       |
| • at 45 °C  | 200 A                       |
| • at 50 °C  | 200 A                       |
| • at 55 °C  | 196 A                       |
| • at 60 °C  | 191.6 A                     |
| Switching capacity according to IEC 60947   |                             |
| maximum short-circuit current breaking capacity (Icu)                                       |                             |
| • at 415 V  | 36 kA                       |
| operating short-circuit current breaking capacity (Ics)                                     |                             |
| • at 415 V  | 27 kA                       |
| short-circuit current making capacity (Icm)   |                             |
| • at 415 V  | 75.6 kA                     |
| Adjustable parameters   |                             |
| adjustable current response value current / of the current-dependent overload release       | 200 ... 200 A               |
| adjustable current response value current / of instantaneous short-circuit trip unit        |                             |
| • minimum   | 2 000 A                     |
| • maximum   | 2 000 A                     |
| design of the N-conductor protection  | 1                           |
| product function / grounding protection   | No                          |
| Mechanical Design   |                             |

|   |                                   |
|---|-----------------------------------|
| height  | 166 mm                            |
| width   | 142.5 mm                          |
| depth   | 85 mm                             |
| <b>Connections</b>  |                                   |
| arrangement of electrical connectors / for main current circuit | Front connection                  |
| type of electrical connection / for main current circuit        | Lug connection line and load side |
| <b>Accessories</b>  |                                   |
| product extension / optional / motor drive                      | No                                |
| <b>Environmental conditions</b>                                 |                                   |
| protection class IP / on the front                              | IP42                              |
| ambient temperature   |                                   |
| • during operation / minimum                                    | -10 °C                            |
| • during operation / maximum                                    | 60 °C                             |
| • during storage / minimum                                      | -15 °C                            |
| • during storage / maximum                                      | 75 °C                             |
| <b>Approvals / Certificates</b>                                 |                                   |
| <b>Test Certificates</b>  | <b>other</b>                      |

[Type Test Certificates/Test Report](#)

[Confirmation](#)

#### Further information

##### Information on the packaging

<https://support.industry.siemens.com/cs/ww/en/view/109813875>

##### Information- and Downloadcenter (Catalogs, Brochures,...)

<http://www.siemens.com/lowvoltage/catalogs>

##### Industry Mall (Online ordering system)

<https://mall.industry.siemens.com/mall/en/en/Catalog/product?mlfb=3VJ1220-5EA42-0AA0>

##### Service&Support (Manuals, Certificates, Characteristics, FAQs,...)

<https://support.industry.siemens.com/cs/ww/en/ps/3VJ1220-5EA42-0AA0>

##### Image database (product images, 2D dimension drawings, 3D models, device circuit diagrams, ...)

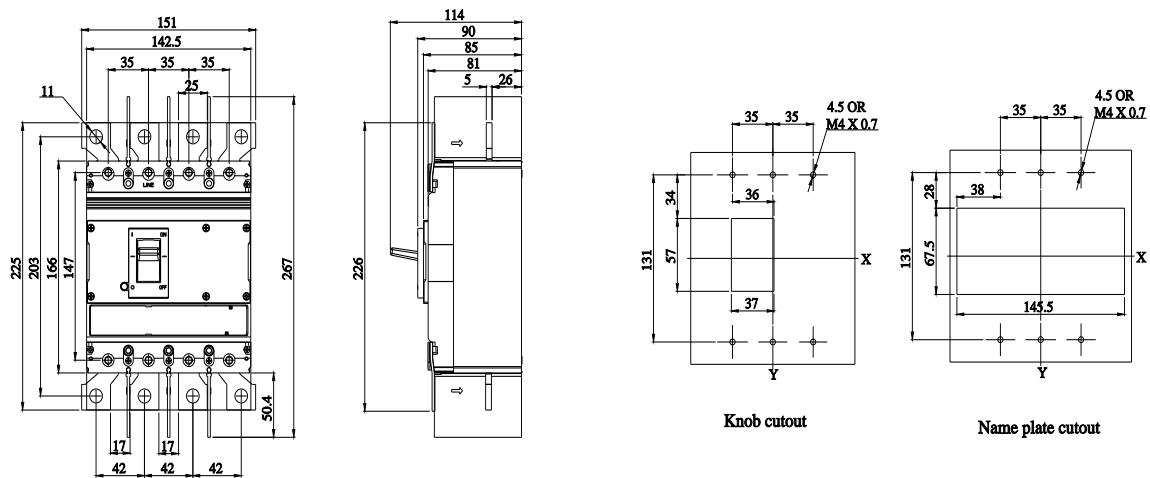
[http://www.automation.siemens.com/bilddb/cax\\_en.aspx?mlfb=3VJ1220-5EA42-0AA0](http://www.automation.siemens.com/bilddb/cax_en.aspx?mlfb=3VJ1220-5EA42-0AA0)

##### CAX-Online-Generator

<http://www.siemens.com/cax>

##### Tender specifications

<http://www.siemens.com/specifications>



last modified:

8/9/2023

