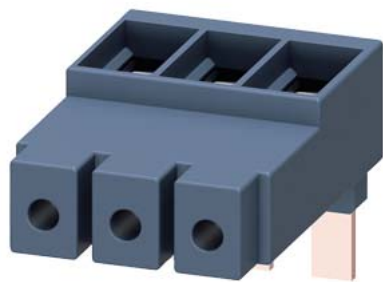


3-phase supply terminal Size S2 for 3-phase busbar connection from top



|   |  |
|---|--|
| product brand name  | SIRIUS   |
| product category  | Plugs, adapters and terminals                    |
| product designation   | 3-phase supply terminal                          |
| design of the product   | from above, size S2                              |
| General technical data  |  |
| size of the circuit-breaker   | S2   |
| insulation voltage with degree of pollution 3 at AC rated value           | 690 V  |
| Substance Prohibitance (Date)   | 10/15/2014                                       |
| ampacity maximum  | 105 A  |
| Ambient conditions  |  |
| ambient temperature   |  |
| • during operation  | -20 ... +60 °C                                   |
| • during storage  | -50 ... +80 °C                                   |
| Environmental footprint   |  |
| Environmental Product Declaration (EPD)                                   | Yes  |
| Global Warming Potential [CO2 eq] total                                   | 139 kg   |
| Global Warming Potential [CO2 eq] during manufacturing                    | 0.161 kg   |
| Global Warming Potential [CO2 eq] during operation                        | 139 kg   |
| Global Warming Potential [CO2 eq] after end of life                       | -0.056 kg  |
| Electrical Safety   |  |
| protection class IP on the front according to IEC 60529                   | IP20   |
| touch protection on the front according to IEC 60529                      | finger-safe, for vertical contact from the front |
| Installation/ mounting/ dimensions  |  |
| height  | 51 mm  |
| width   | 55 mm  |
| depth   | 77 mm  |
| Connections/ Terminals  |  |
| type of electrical connection for main current circuit                    | screw-type terminals                             |
| type of connectable conductor cross-sections                              |  |
| • for main contacts   |  |
| — solid   | 2x (2.5 ... 50 mm²), 1x (2.5 ... 70 mm²)         |
| — stranded  | 2x (2.5 ... 50 mm²), 1x (2.5 ... 70 mm²)         |
| — finely stranded with core end processing                                | 2x (2.5 ... 35 mm²), 1x (2.5 ... 50 mm²).        |
| • for AWG cables for main contacts  | 2x (10 ... 1/0), 1x (10 ... 2/0)                 |
| connectable conductor cross-section for main contacts                     |  |
| • solid or stranded   | 2.5 ... 70 mm²                                   |
| • stranded  | 2.5 ... 70 mm²                                   |
| • finely stranded with core end processing                                | 2.5 ... 50 mm²                                   |
| AWG number as coded connectable conductor cross section for main contacts | 10 ... 2   |

## Approvals Certificates

### General Product Approval



[Confirmation](#)



### Test Certificates

[Special Test Certificate](#)

### Test Certificates

#### Marine / Shipping

[Type Test Certificates/Test Report](#)



#### Marine / Shipping

#### other

#### Railway

#### Environment



[Miscellaneous](#)

[Confirmation](#)



[Special Test Certificate](#)



### Environment

[Environmental Conformations](#)

## Further information

Information on the packaging

<https://support.industry.siemens.com/cs/ww/en/view/109813875>

Information- and Downloadcenter (Catalogs, Brochures,...)

<https://www.siemens.com/ic10>

Industry Mall (Online ordering system)

<https://mall.industry.siemens.com/mall/en/en/Catalog/product?mlfb=3RV2935-5A>

Cax online generator

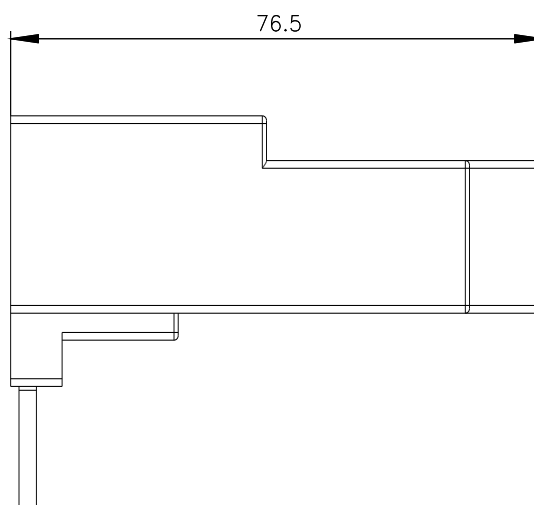
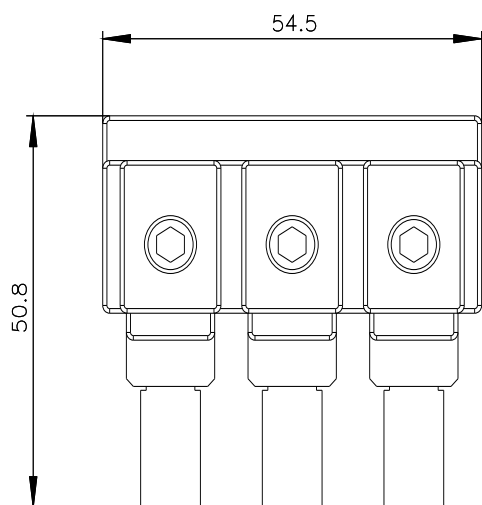
<http://support.automation.siemens.com/WW/CAXorder/default.aspx?lang=en&mlfb=3RV2935-5A>

Service&Support (Manuals, Certificates, Characteristics, FAQs,...)

<https://support.industry.siemens.com/cs/ww/en/ps/3RV2935-5A>

Image database (product images, 2D dimension drawings, 3D models, device circuit diagrams, EPLAN macros, ...)

[http://www.automation.siemens.com/bilddb/cax\\_de.aspx?mlfb=3RV2935-5A&lang=en](http://www.automation.siemens.com/bilddb/cax_de.aspx?mlfb=3RV2935-5A&lang=en)



---

last modified:

1/10/2024 