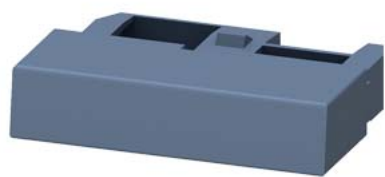


Cover cap for transverse auxiliary switch for circuit breaker 3RV2



product brand name	SIRIUS
product category	Auxiliary switch
product designation	Cover
design of the product	cover caps for transverse auxiliary switch
General technical data	
size of the circuit-breaker	S00, S0, S2, S3
display version LED	No
degree of pollution	3
Substance Prohibitance (Date)	10/01/2009
Ambient conditions	
ambient temperature	
• during operation	-20 ... +60 °C
• during storage	-50 ... +80 °C
Environmental footprint	
Environmental Product Declaration(EPD)	Yes
Global Warming Potential [CO2 eq] total	4.44 kg
Global Warming Potential [CO2 eq] during manufacturing	0.238 kg
Global Warming Potential [CO2 eq] during operation	4.2 kg
Global Warming Potential [CO2 eq] after end of life	0.0053 kg
Installation/ mounting/ dimensions	
fastening method	plug-in fixing
height	45 mm
width	10 mm
depth	35 mm
Approvals Certificates	
General Product Approval	
Test Certificates	



[Confirmation](#)





[Type Test Certificates/Test Report](#)

[Special Test Certificate](#)

Marine / Shipping



other		Railway	Environment
Miscellaneous	Confirmation		
		Special Test Certificate	Environmental Confirmations

Further information

Information on the packaging

<https://support.industry.siemens.com/cs/ww/en/view/109813875>

Information- and Downloadcenter (Catalogs, Brochures,...)

<https://www.siemens.com/ic10>

Industry Mall (Online ordering system)

<https://mall.industry.siemens.com/mall/en/en/Catalog/product?mlfb=3RV2901-0H>

Cax online generator

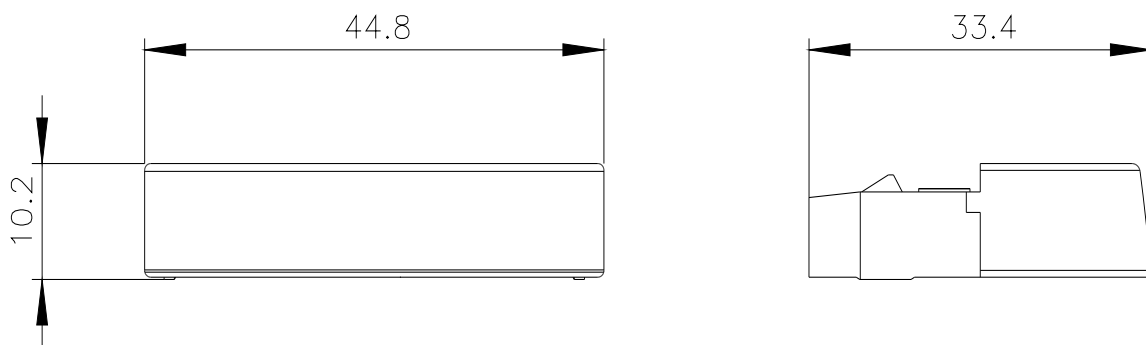
<http://support.automation.siemens.com/WW/CAXorder/default.aspx?lang=en&mlfb=3RV2901-0H>

Service&Support (Manuals, Certificates, Characteristics, FAQs,...)

<https://support.industry.siemens.com/cs/ww/en/ps/3RV2901-0H>

Image database (product images, 2D dimension drawings, 3D models, device circuit diagrams, EPLAN macros, ...)

http://www.automation.siemens.com/bilddb/cax_de.aspx?mlfb=3RV2901-0H&lang=en



last modified:

1/10/2024 