



Neutral conductor/PE terminal, continuous, for floor mounting, installation in distribution boards, Molded-plastic encapsulation, accessory for main and emergency switching-off switch 3LD25 for 63A and for molded case switch 3LD5 UL for 30A

Model	
product brand name	SETRON
product designation	Neutral conductor/PE terminal
design of the product	accessories for 3LD25 main and EMERGENCY-STOP switches
AWG number as coded connectable conductor cross section	
• minimum	14
• maximum	6
type of connectable conductor cross-sections for main contacts	
• finely stranded with core end processing	1x (2.5...35 mm²)
• solid or stranded	1x (2.5 ... 16 mm²)
Approvals Certificates	
General Product Approval	

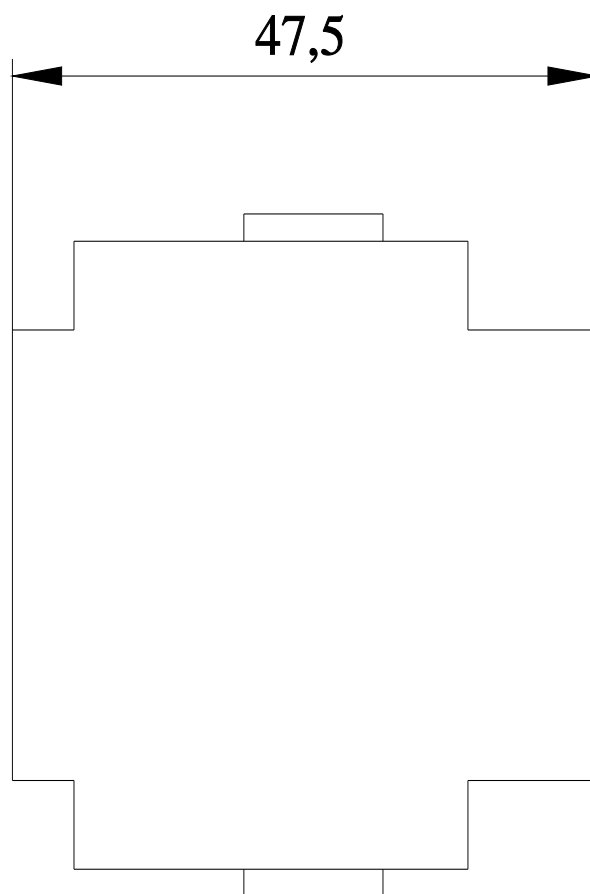
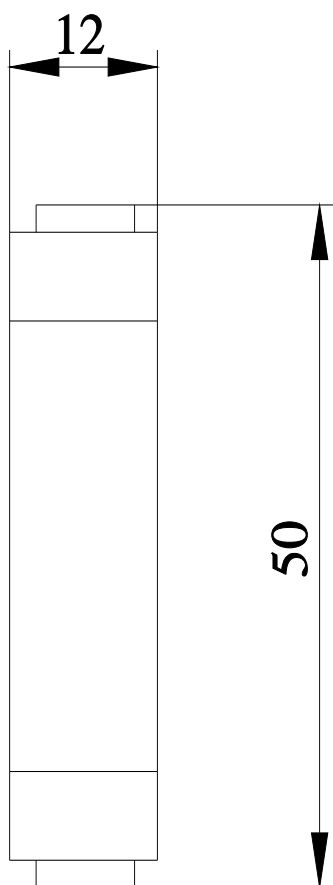


[Confirmation](#)



other	Environment
Confirmation	Miscellaneous
	Environmental Con- firmations
	Environmental Con- firmations

Further information
Information on the packaging https://support.industry.siemens.com/cs/ww/en/view/109813875
Information- and Downloadcenter (Catalogs, Brochures,...) http://www.siemens.com/lowvoltage/catalogs
Industry Mall (Online ordering system) https://mall.industry.siemens.com/mall/en/en/Catalog/product?mlfb=3LD9250-2CA
Service&Support (Manuals, Certificates, Characteristics, FAQs,...) https://support.industry.siemens.com/cs/ww/en/ps/3LD9250-2CA
Image database (product images, 2D dimension drawings, 3D models, device circuit diagrams, ...) http://www.automation.siemens.com/bilddb/cax_en.aspx?mlfb=3LD9250-2CA
CAX-Online-Generator http://www.siemens.com/cax
Tender specifications http://www.siemens.com/specifications



last modified:

4/18/2024 