



SINOVA, onload changeover switches 3KJ0, manually operated, size 5, 4-pole, in open execution, I<sub>u</sub>: 3150 A, U<sub>e</sub> AC: 415 V, I<sub>e</sub> at AC-21 B at 415 V: 3150 A, screw mounting, front operating mechanism, at the left end, complete unit with door operating mechanism, Metallic handle, grey and black colour, flat terminal

Model	
product brand name	SINOVA
product designation	3KJ0 On-load changeover switches
design of the product	manually operated
display version for switch position indicator door-coupling rotary operating mechanism	I ON- O OFF- II ON
design of the actuating element	Door-coupling rotary operating mechanism
design of handle	with
type of the driving mechanism	Front operating mechanism
type of the driving mechanism motor drive	No
number of poles	4
size of switch disconnecter	5
mechanical service life (operating cycles) for function sequence O-I-O typical	900
position of the switch operating mechanism	at the left end
overvoltage category	III
degree of pollution	3
insulation voltage rated value	1 000 V
operational current at AC rated value	3 150 A
protection class IP	IP00
protection class IP	
• with closed switch with cover or cable lug cover	IP00
• on the front	IP00
power loss [W] with conventional rated thermal current	
• per pole	140 W
• per device	560 W
number of connected NC contacts for auxiliary contacts	0
number of connected NO contacts for auxiliary contacts	0
number of connected CO contacts for auxiliary contacts	0
number of CO contacts for auxiliary contacts	0
number of NC contacts for auxiliary contacts	2
number of NO contacts for auxiliary contacts	2
suitability for use	
• main switch	Yes
• switch disconnecter	Yes
• EMERGENCY OFF switch	Yes
• safety switch	Yes
• maintenance/repair switch	Yes
product feature interlock	No
product extension auxiliary switch	Yes
product extension optional	

<ul style="list-style-type: none"> <li>• motor drive</li> </ul>	No
<ul style="list-style-type: none"> <li>• voltage trigger</li> </ul>	No
type of connectable conductor cross-sections	
<ul style="list-style-type: none"> <li>• for copper busbar</li> </ul>	3x (100x10 mm)
type of connectable conductor cross-sections for copper conductor	
<ul style="list-style-type: none"> <li>• stranded with lug according to DIN 46234</li> </ul>	3x (100x10 mm <sup>2</sup> )
type of electrical connection for main current circuit	flat terminal
height	326 mm
width	556 mm
depth	521 mm
type of device	fixed mounting
fastening method	Screw fixing
fastening method	
<ul style="list-style-type: none"> <li>• 4-hole front mounting</li> </ul>	No
<ul style="list-style-type: none"> <li>• front mounting with central attachment</li> </ul>	No
<ul style="list-style-type: none"> <li>• rail mounting</li> </ul>	No
mounting position	Wall,Horizontal
net weight	139 000 g
ambient temperature during operation	
<ul style="list-style-type: none"> <li>• minimum</li> </ul>	-5 °C
<ul style="list-style-type: none"> <li>• maximum</li> </ul>	40 °C
ambient temperature during storage	
<ul style="list-style-type: none"> <li>• minimum</li> </ul>	-10 °C
<ul style="list-style-type: none"> <li>• maximum</li> </ul>	70 °C

#### Approvals Certificates

##### Test Certificates

[Type Test Certificates/Test Report](#)

#### Further information

##### Information on the packaging

<https://support.industry.siemens.com/cs/ww/en/view/109813875>

##### Information- and Downloadcenter (Catalogs, Brochures,...)

<http://www.siemens.com/lowvoltage/catalogs>

##### Industry Mall (Online ordering system)

<https://mall.industry.siemens.com/mall/en/en/Catalog/product?mlfb=3KJ0560-4AA30-0AA0>

##### Service&Support (Manuals, Certificates, Characteristics, FAQs,...)

<https://support.industry.siemens.com/cs/ww/en/ps/3KJ0560-4AA30-0AA0>

##### Image database (product images, 2D dimension drawings, 3D models, device circuit diagrams, ...)

[http://www.automation.siemens.com/bilddb/cax\\_en.aspx?mlfb=3KJ0560-4AA30-0AA0](http://www.automation.siemens.com/bilddb/cax_en.aspx?mlfb=3KJ0560-4AA30-0AA0)

##### CAX-Online-Generator

<http://www.siemens.com/cax>

##### Tender specifications

<http://www.siemens.com/specifications>



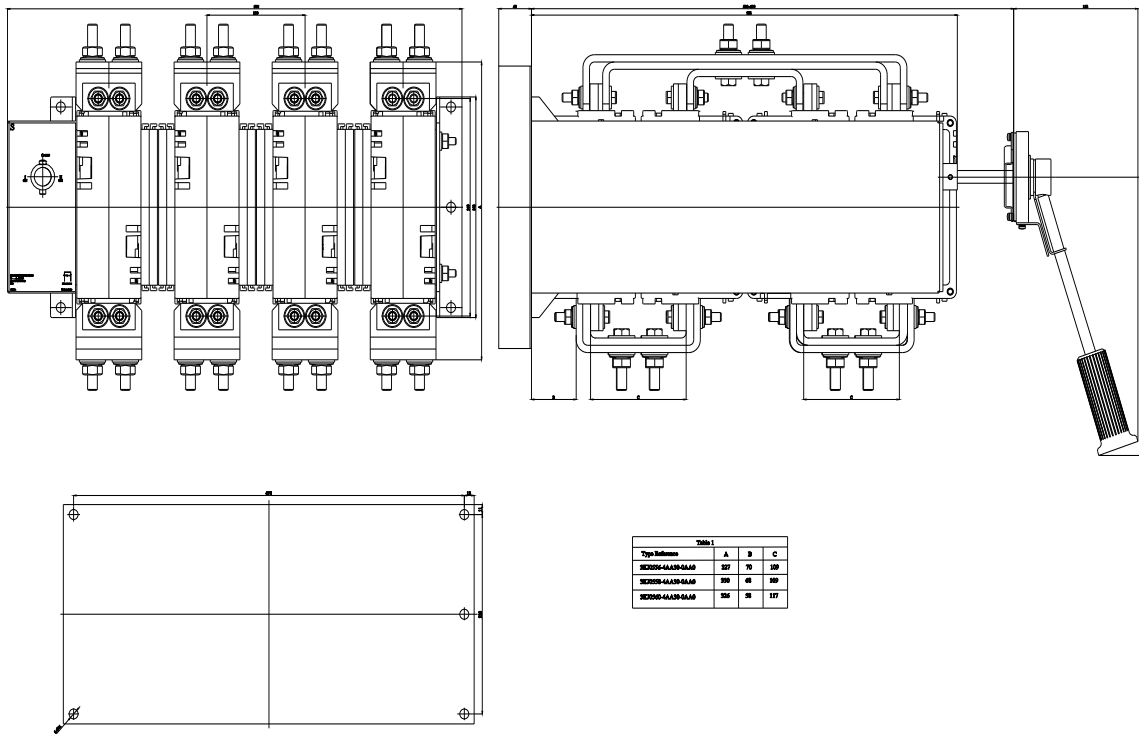


Table 1			
Type Reference	A	B	C
3KJ056-4A/30-6A/6	257	76	258
3KJ056-4A/30-6A/6	191	46	192
3KJ056-4A/30-6A/6	156	38	157

