



SINOVA, onload changeover switches 3KJ0, manually operated, size 4, 4-pole, in open execution, I<sub>u</sub>: 1250 A, U<sub>e</sub> AC: 415 V, I<sub>e</sub> at AC-22 A at 415 V: 1250 A, screw mounting, front operating mechanism, at the left end, complete unit with door operating mechanism, Metallic handle, grey and black colour, flat terminal

Model	
product brand name	SINOVA
product designation	3KJ0 On-load changeover switches
design of the product	manually operated
display version for switch position indicator door-coupling rotary operating mechanism	I ON- O OFF- II ON
design of the actuating element	Door-coupling rotary operating mechanism
design of handle	with
type of the driving mechanism	Front operating mechanism
type of the driving mechanism motor drive	No
number of poles	4
size of switch disconnecter	4
mechanical service life (operating cycles) for function sequence O-I-O typical	4 500
position of the switch operating mechanism	at the left end
overvoltage category	III
degree of pollution	3
insulation voltage rated value	1 000 V
operational current at AC rated value	1 250 A
protection class IP	IP00
protection class IP <ul style="list-style-type: none"><li>• with closed switch with cover or cable lug cover</li><li>• on the front</li></ul>	IP00 IP00
power loss [W] with conventional rated thermal current <ul style="list-style-type: none"><li>• per pole</li><li>• per device</li></ul>	40 W 160 W
number of connected NC contacts for auxiliary contacts	0
number of connected NO contacts for auxiliary contacts	0
number of connected CO contacts for auxiliary contacts	0
number of CO contacts for auxiliary contacts	0
number of NC contacts for auxiliary contacts	2
number of NO contacts for auxiliary contacts	2
suitability for use <ul style="list-style-type: none"><li>• main switch</li><li>• switch disconnecter</li><li>• EMERGENCY OFF switch</li><li>• safety switch</li><li>• maintenance/repair switch</li></ul>	Yes Yes Yes Yes Yes
product feature interlock	No
product extension auxiliary switch	Yes
product extension optional	

• motor drive	No
• voltage trigger	No
type of connectable conductor cross-sections	
• for copper busbar	2x (80x5 mm)
type of connectable conductor cross-sections for copper conductor	
• stranded with lug according to DIN 46234	2x (80x5 mm <sup>2</sup> )
type of electrical connection for main current circuit	flat terminal
height	368 mm
width	496 mm
depth	262 mm
type of device	fixed mounting
fastening method	Screw fixing
fastening method	
• 4-hole front mounting	No
• front mounting with central attachment	No
• rail mounting	No
mounting position	Wall,Horizontal
net weight	47 000 g
ambient temperature during operation	
• minimum	-5 °C
• maximum	40 °C
ambient temperature during storage	
• minimum	-10 °C
• maximum	70 °C

#### Approvals Certificates

##### Test Certificates

[Type Test Certificates/Test Report](#)

#### Further information

##### Information on the packaging

<https://support.industry.siemens.com/cs/ww/en/view/109813875>

##### Information- and Downloadcenter (Catalogs, Brochures,...)

<http://www.siemens.com/lowvoltage/catalogs>

##### Industry Mall (Online ordering system)

<https://mall.industry.siemens.com/mall/en/en/Catalog/product?mlfb=3KJ0452-4AA30-0AA0>

##### Service&Support (Manuals, Certificates, Characteristics, FAQs,...)

<https://support.industry.siemens.com/cs/ww/en/ps/3KJ0452-4AA30-0AA0>

##### Image database (product images, 2D dimension drawings, 3D models, device circuit diagrams, ...)

[http://www.automation.siemens.com/bilddb/cax\\_en.aspx?mlfb=3KJ0452-4AA30-0AA0](http://www.automation.siemens.com/bilddb/cax_en.aspx?mlfb=3KJ0452-4AA30-0AA0)

##### CAX-Online-Generator

<http://www.siemens.com/cax>

##### Tender specifications

<http://www.siemens.com/specifications>



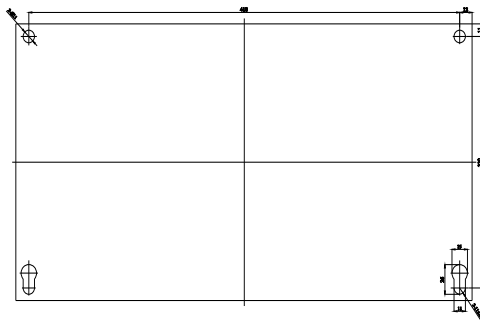
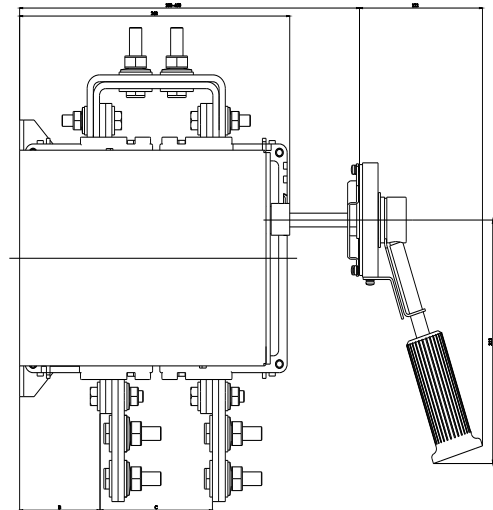
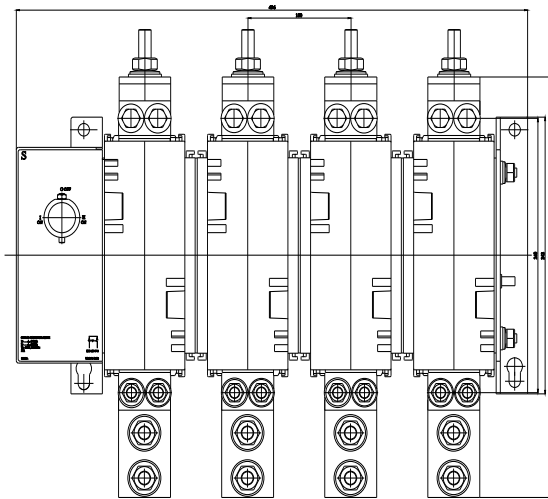
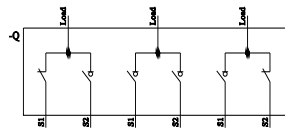


Table 1			
Type Reference	A	B	C
3KJ0452-4AA30-0AA0	507	76	109
3KJ0452-4AA30-0AA0	508	76	109
3KJ0454-4AA30-0AA0	573	74	117



Siemens

3KJ04...-4AA30-0AA0\_UWD\_JEC.dxf  
FORMAT/SIZE: DIN A3 QUER 1420mmx8297mm  
RASTER 4mm



