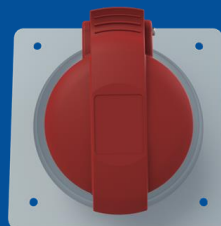


432RAU6

# Panel mounted socket

## 2CMA193283R1000



Panel mounted socket, earthing sleeve position 6h, rated current 32A, IP44 splashproof, unified flange, angled, 3-poles+neutral+earth, frequency 50-60 Hz, color code Red

## GENERAL

Product Name	Panel mounted socket
Product ID	2CMA193283R1000
Function	Panel mounted socket
EAN	7392696932837
Catalog Description	Socket-outlet, panel mounting, 6h, 32A, IP44, unified flange, angled, 3P+N+E
Country of Origin	Czech Republic (CZ)
E-Number Finland	2421276
E-Number Norway	1547453
E-Number Sweden	E2416670
Standards	IEC 60309-1, -2
RoHS Status	Following EU Directive 2011/65/EU

## DIMENSIONS

Product Net Width	110 millimetre
Product Net Height	110 millimetre
Product Net Length	117 millimetre
Product Net Depth	117 millimetre
Product Net Weight	0.28 kilogram

## TECHNICAL

Product Main Type	ERAU
Color	Red
Number of Poles	5
Clock Position	6Hour
Rated Current	32 ampere
Rated Voltage	200/346 ... 240/415 volt
Frequency	50 hertz 60 hertz
Degree of Protection	IP44
Cable Cross-Section	2.5...10 mm <sup>2</sup>
Housing Material	Plastic (PA)
Plug Angle	Angled
Product Group	Easy&Safe

## PACKAGING

Package Width	188 millimetre
Package Height	428 millimetre
Package Gross Weight	2.8 kilogram
Package Length	175 millimetre
Package Units	box 10 piece