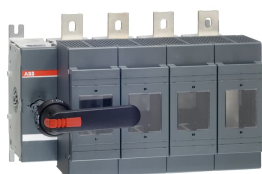


## PRODUCT-DETAILS

# OS630D04N2P

## OS630D04N2P SWITCH FUSE



### General Information

Extended Product Type	OS630D04N2P
Product ID	1SCA022825R4290
EAN	6417019283586
Catalog Description	OS630D04N2P SWITCH FUSE
Long Description	Switch Fuses,Front Operated,4-pole,04 (Left Side),DIN,3,Handle and shaft included,Switched - With Solid Link

### Circular Value

Conflict Minerals Reporting Template (CMRT)	9AKK108467A5658
REACH Declaration	1SCC011021D0201
RoHS Information	1SCC011020D0201
Toxic Substances Control Act - TSCA	1SCC011025D0201

### Ordering

Minimum Order Quantity	1 piece
------------------------	---------

Customs Tariff Number	85365080
Country of Origin	Finland (FI)

Popular Downloads

Data Sheet, Technical Information	1SCC311013C0201
Instructions and Manuals	1SCC311016M0210

Dimensions

Product Net Width	431 mm
Product Net Height	306 mm
Product Net Depth / Length	233 mm
Product Net Weight	19.04 kg 41.98 lb

Technical

Rated Operational Current AC-21A ( $I_e$ )	(500 V) 630 A (690 V) 630 A
Rated Operational Current AC-22A ( $I_e$ )	(380 ... 415 V) 630 A (500 V) 630 A (690 V) 630 A
Rated Operational Current AC-23A ( $I_e$ )	(500 V) 630 A (380 ... 415 V) 630 A (690 V) 630 A
Rated Operational Current AC-23B ( $I_e$ )	(380 ... 415 V) 630 A (500 V) 630 A (690 V) 630 A
Rated Operational Power AC-23A ( $P_e$ )	(220 ... 240 V) 200 kW (400 V) 355 kW (415 V) 355 kW (500 V) 450 kW (690 V) 630 kW
Conventional Free-air Thermal Current ( $I_{th}$ )	$\Theta = 40\text{ }^{\circ}\text{C}$ 630 A
Conventional Thermal Current ( $I_{the}$ )	Fully Enclosed 570 A
Rated Impulse Withstand Voltage ( $U_{imp}$ )	12 kV
Rated Insulation Voltage ( $U_i$ )	1000 V
Rated Operational Voltage	Main Circuit 690 V AC
Rated Short-time Withstand Current Low Voltage ( $I_{cw}$ )	for 1 s 18 kiloampere rms
Rated Conditional Short-Circuit Current ( $I_{nc}$ )	(690 V) 80 kA
Power Loss	at Rated Operating Conditions per Pole 60 W
Pollution Degree	3
Handle Type	Pistol handle and shaft included
Fourth Pole Position	Right Side
Fourth Pole Type	Switched - With Solid Link
Switches Operating	04 (Left Side)

## Mechanism

Position of Line Terminals	Top In - Bottom Out, Bottom In - Top Out
Fuse Size	NH3
Fuse System	DIN
Operating Mode	Front Operated
Standards	IEC 60947-3
Mounting Type	Base mounting
Number of Poles	4
Terminal Type	Lug terminals
Terminal Width	39 mm
Tightening Torque	50 ... 75 N·m
Rated Current ( $I_n$ )	Main Circuit 630 A

## Technical UL/CSA

Tightening Torque	50 ... 75 N·m
-------------------	---------------

## Environmental

RoHS Status	Following EU Directive 2011/65/EU and Amendment 2015/863 July 22, 2019
Toxic Substances Control Act - TSCA	1SCC011025D0201

## Certificates and Declarations

CCC Certificate	CCC OS630-800 2016
Declaration of Conformity - CE	1SCC311112D2704
DNV GL Certificate	1SCC311131D0202
REACH Declaration	1SCC011021D0201

## Container Information

Package Level 1 Units	box 1 piece
Package Level 1 Width	328 mm 12.91 in
Package Level 1 Depth / Length	453 mm 17.83 in
Package Level 1 Height	260 mm 10.24 in
Package Level 1 Gross Weight	19.9 kg 43.87 lb
Package Level 1 EAN	6417019283586

## Classifications

Object Classification Code	Q
ETIM 7	EC001040 - Fuse switch disconnecter
ETIM 8	EC001040 - Fuse switch disconnecter
ETIM 9	EC001040 - Fuse switch disconnecter

UNSPSC	39122233
IDEA Granular Category Code (IGCC)	5291 >> Fuse switch disconnecter
eClass	V11.1 : 27371401
WEEE Category	5. Small Equipment (No External Dimension More Than 50 cm)
E-Number (Finland)	3661514

Categories

Low Voltage Products and Systems → Switches → Switch Fuses

